



Rainbow Reflections

NONPROFIT ORG
US POSTAGE PAID
DENVER, CO
PERMIT NO. 5377

Lutheran Outdoor Ministries of the Rockies
Rainbow Trail Lutheran Camp
107 South Ninth Street, Suite B
Canon City, Colorado 81212

Volume 38, Number 2 Spring 2026

Rainbow Trail is operated and maintained under authority of a USDA Forest Service Special Use Permit. Rainbow Trail is located in the San Isabel National Forest, USDA.

Farewell to Chris

Chris takes her official retirement in May

The smell of fresh bread, the steam from warm delicious food, the care placed in each meal, a kitchen that felt like home! Each of these a gift that we have come to almost take for granted in the over two decades that Chris Seaman has blessed Rainbow Trail as our Head Cook. If you have had the pleasure of meeting Chris you'll never forget her. She is quick with a smile, has hugs for everyone, and if you've been around you certainly have experienced her quick wit and humor! To know her is to love her. I asked Delta in the office the other day, how would you describe Chris? Delta said, "Chris is a pistol a real pistol. She's a hoot! She always has a gift for me. And I love her!" Chris was always full of love, humor, gifts, and smiles! But above all, she always had food for everyone. Meals for campers, specialty items,



extras for staff. You never left the kitchen hungry and certainly always with a smile when you shared a few minutes with Chris!

It is hard to truly capture in words how incredible Chris's ministry has been at RTALC for so many years. To have such faithful dedication to food care, love for everyone in the kitchen, and hospitality for anyone who came to RTALC! Chris is one of

the rare few who truly impacted everyone who enjoyed a meal at camp. For Chris, it wasn't just making food, it was truly a ministry to bless others. If you asked campers over the years what their favorite part of camp was, it wasn't unusual to hear "the food!" Delicious food that is at the heart of the RTALC philosophy that Chris helped to capture for so many years. She took care of food allergies,

always had cookies for the road, and took time to stop, listen, teach, and care for all of those who came through her kitchen! She has been such a gift to so many!

While thank you doesn't seem like enough, we do thank God for the gift He has given Rainbow Trail and so many of us through the service and life of Chris over so many years at camp. There are smells of food and recipes at camp that will carry on her legacy for years to come! And there are memories and stories of endless moments in the kitchen that so many will carry for a lifetime. In many ways, Chris has made the kitchen a piece of sacred ground where many have tasted and seen a bit more of Jesus through the gift of her life. Thank you Chris for the meals, smiles, love, gifts, and memories that will forever be a piece of Rainbow Trail! We love you!

Inching Ever Closer

RTALC has taken major steps forward in the land exchange over the last 7 months

In 1998, the Rainbow Trail Board of Directors first approached the U.S. Forest Service about doing a land exchange to own our site. At that time, the Forest Service was not even interested in exploring the exchange. Roll forward twenty-five years, and we are now on the verge of completing this exchange and owning our site!

It has been an amazing journey to bring us to this point: from cottage meetings in the backyards of our supporters sharing the "why's" of the land exchange; to raising over \$600,000 in 2012 that would allow us to pay cash for the purchase of the land in 2014 that we will use in the land exchange; to submitting our official land exchange proposal to the Forest Service in 2018; to where we sit today!

We are deep in the land exchange pro-

cess now. We know this has been a long process, but major strides have been made by RTALC over the last 7 months. In September, the Rainbow Trail Board of Directors finalized and approved the new Site Master Plan for the acreage we will have after the exchange is completed. This is the culmination of over a year of work by our Board with our consultant from Tapis Associates. The final draft version of the Conservation Easement with Palmer Land Conservancy is also completed and has been reviewed by the Forest Service. And finally, the draft Environmental Assessment is completed and has been reviewed by the Forest Service. With all these steps in place, the Forest Service was ready to move to the next public comment period which began on March 24th. That is a 30-day comment period for

the public to review the documents and to ask questions or comment on the specifics of this land exchange. The Forest Service also hosted a community public meeting in Westcliffe on April 6th. Several Rainbow Trail staff and Board members attended the public meeting, and all agreed it was a very positive meeting.

The Forest Service still must complete several steps in order for us to complete this land exchange, but we are all cautiously optimistic that there is an end in sight. Dave Jarvis, retired RTALC Executive Director, and Chris Lieber, who has served on the RTALC Board, will continue to be the RTALC point people on the exchange until it is completed.

We ask for your continued prayers and financial support for the

exchange process. Your contributions at this stage will help us see this process to fruition. If you haven't given to the land exchange yet, consider making a special gift for the future generations that will be a part of this ministry. This is a project that the RTALC community has rallied around. Any remaining funds after the completion of the exchange will be used for the first major project of the new master plan. If you want to know more, Dave Jarvis would love to have a more in-depth conversation with you and explain more about this once-in-a-lifetime opportunity. You can reach him by email at dave@rainbowtrail.org or by phone at 719-429-1377. Help us make Rainbow Trail Lutheran Camp our Home At Last!

Rainbow Trail Mission Statement

Rainbow Trail Lutheran Camp creates holy spaces that embody God's radical grace to affirm, empower, and transform all people to be Christ's light in the world

Full Circle

By Dave Gunnlaugsson - Executive Director

100 days! Just last week I hit the 100 day mark as Executive Director of Rainbow Trail! It feels crazy to type it and even more so to see it on the screen in front of me. I've driven thousands of miles, written articles, signed thank you letters, met with staff, helped lead retreats, recruited and hired staff, encountered endless wonderful people, asked many questions, recorded videos, and learned more new things every day than I could count! It has been an incredible journey so far, and we are just getting started! And although it has been incredibly busy, I'm so thankful for this amazing opportunity!



Amidst the day-to-day business of camp has been some of the best moments I have shared with God in a long time. Just last night I stopped on the road to camp and parked in the middle of the herd of elk, turned off the car, rolled down the window and just listened. I could hear their breathing and footsteps. It was truly a sacred moment to be in the quiet midst of God's incredible creation that surrounds Rainbow Trail.

I shared Leviticus 26:12 in April's thank you letter, "I will walk among you and be your God, and you will be my people." As I have experienced both the work and quiet of RTLCL at this time of the year I am so encouraged by the truth of these words, "I will walk among you." I have experienced God's hand at work in the people I've met, the conversations, the sunrises, endless stars, retreat groups, children's laughter throughout the site, in the kitchen, the office, and walking throughout site listening to the returning robins every morning. I'm thankful to be walking with God in this journey and so humbled to know that RTLCL, and all that lays ahead, is in His hands. What a gift that we all get to share this place together! Please continue to pray for RTLCL and know that God is walking with you wherever you may be. Summer is quickly approaching! We have hired an incredible summer staff. They are so gifted and excited to share the summer with your amazing families and kids! They have been busy with Spring training receiving articles, videos, the Bible Study and other trainings to begin to prepare them for summer. At the same time, they are busy finishing up classes, study abroad, internships and so much more. As you look through this newsletter I'd encourage you to hang their pictures up and pray for each one of them as God prepares them for summer! They really are an incredible crew. I can't wait for you to meet them!

Matt and I met last week with the contractors for our Memorial Day Work Weekend! What an amazing crew of contractors who really bless RTLCL through their time and service. They have put together some really great projects for the weekend. We only are about half full for the weekend and would really love to have about 50-60 more people join us even if only for part of the weekend. Matt is working hard to prepare. Feel free to email info@rainbowtrail.org if you'd like to join us!

You may have also read on the front page that we are preparing to say farewell to our beloved head cook Chris Seaman. While the article says it best I just wanted to say again how incredibly thankful we are for her and the endless passion and love she has poured into RTLCL for the past two decades! I'm so thankful for her and the joy she brings! I will miss her and the amazing food, and feistiness she brings! We love you Chris!

I also just want to take a moment as well to thank the amazing full time team that gives so much to RTLCL every day! We have worked through conversations, transitions, and change together for the past several months! While it has had some challenging times I wouldn't trade any of them and am so thankful to walk with them in this journey every day. If you feel so inclined send them a note of thanks and encouragement as summer approaches. Thank you Ruth, Tricia, Jackson, Abby, Will, Matt, Chris, Glenda, Delta and Cam for the way you pour your heart into this place every day! Let's go have an awesome summer together!

While there is much more to say, I just want to close by again thanking each of you for your support, donations, prayers, and love that you give so freely to Rainbow Trail! I can't tell you how humbling it is to know there are people all over the country praying, supporting, and doing all that they can to support RTLCL! Thank you! And please be praying for the summer. It is our hope that our campers lives will never be the same after experiencing RTLCL and the Jesus that has set us all free! And please come by and see us this summer! Our hands are open this summer to all that God has! Thank you again, we are praying for you and your families! Much love from RTLCL!

-Dave

Thank You Abby and Jackson!



We are so thankful for our gifted 2025-2026 Program Assistants!! Jackson and Abby joined us in the fall. They helped plan and implement our Confirmation and Senior High retreats. They also intentionally welcomed our guests and created relational spaces. We are grateful for their curiosity, creativity, enthusiasm, and wonder they brought to our team! Jackson will be staying with us this summer as our Support Staff Director, and we are excited for his continued leadership and presence on our team. Abby transitions to Austin to serve as a Youth Director, we send her with deep gratitude and excitement for what's ahead.

We are so thankful for both Jackson and Abby and the ways they have shaped this place. May God go with you as you continue to engage the world as beloved children of God. And always know you have a home here!

CAMP Vibes

By Cam Regennitter - Assistant Director

Reflecting on the book of Romans, the depth of God's grace and what it means to live in response to it, one theme that continues to stand out is that God meets us right where we are, not once we have it all together, but in the middle of our mess, our questions, and our everyday lives. Paul's words about God's faithfulness and mercy have been a grounding reminder that our lives are shaped not by our perfection, but by His grace. It's been a helpful lens for this season, recognizing that God is present in both the big moments and the ordinary rhythms of life. Whether we're walking through uncertainty or celebrating wins, His presence and promises remain steady. And it's encouraging to remember that God continues to use ordinary people, our staff, our campers, and each of us, for meaningful, lasting impact.



Summer is quickly approaching, and the energy around camp is building! Our team is deep in preparation, with training underway and every part of camp being readied to welcome another incredible season. Our summer staff team is coming together with a great mix of returning leaders and new faces, bringing fresh energy and perspective. There's a strong sense of anticipation across our full-time team as we prepare mentally, physically, and spiritually for a summer of meaningful ministry. I'm already praying for impactful, life-changing moments for every camper who steps onto camp this year.

Bridging Borders continues to grow in exciting ways this summer. We're sending a team back to the Appalachia region to partner with local ministries, stepping into opportunities to serve through housing support, food access, and community development. It's always powerful to see our students and staff engage in hands-on service while building real relationships.

On the personal side, this season has been full in the best way. Pierce is growing like crazy, and his personality is showing more and more every day. He is a bright, bubbly boy, and when he smiles, he looks just like his mama. I can't wait for many of you to see him this summer. My favorite part is watching everyone love him. It is a gift from God, no doubt about it! Delta is the best mama ever, and I am so blessed to have a wife who is full of light. She shows us so much of God's love.

Aside note: you may have noticed my photo in this article. It's my way of sharing. I made my first hole-in-one in March! Four Mile Ranch golf course, par 3, 171 yards out. I'll tell you I haven't felt that rush of adrenaline since the day Pierce came into this world. I should just hang up the clubs and call it a career; no better feeling than making that.

Thank you for your continued support, prayers, and encouragement. It truly makes a difference as we head into this summer. I'm grateful to be part of what God is doing and excited to see all that's in store.

Go In Peace,

Cam

Talking Shop

By Matt Turman - Director of Site and Facilities

Howdy to all our reflections readers. I hope everyone who is reading this is having a wonderful spring and enjoying the blooming trees all around. Up at camp I've had the privilege of seeing the seasons complete their cycle as I've reached a year in the role as Site and Facilities Director. What a year it has been! From getting to camp and having a month to plan for Memorial Day Work Weekend, right into a busy summer season and a packed fall, it's been nothing but a joy to be serving the Rainbow Trail community again.



So what's new in the world of maintenance you might wonder? Well the world famous Rainbow Trail Memorial Day Work Weekend is a month and some change away. I am working on getting things together for that while also getting our site and vehicles ready to go for the summer. We just had our contractor dinner at the Michelin rated outback steakhouse to plan the projects for the weekend, and like always there's a lot to do! We've had great success with our snowbrakes from last year and plan to add more to key areas of site that are used in the winter like Holling Lodge and Golden Banner. We are looking at restoring our bus as well! If anyone feels like turning a wrench and cleaning it for a weekend, come out because there are still empty beds. Repairing decks, ramps, gutters, removing aging trees, building generator shelters to help with power outages, new cleaning closets to make sho-ho easier, some gnarly work insulating under aspen, and lots of staining and painting just to name a few of the projects are in store! I'm so excited since I've had ample time to dream and prepare, and can not wait to see what all will be done.

As for myself, not too much has changed since living in Silver Cliff. I have an urge to start playing music more regularly, and have been trying to stay fit for the approaching summer work load. I got to see my family for Easter and had a wonderful time back in Texas smoking brisket and seeing relatives. The brisket was a new tradition and we had to procure an offset smoker. Blood sweat and maybe a couple tears went into it because we dropped the grill when unloading it and my father got his leg gashed by its corner resulting in a hospital trip and stitches. You may be wondering, "well was the brisket worth it?" Some of the Easter attendees would say yes, but being the connoisseur that I am, I must earnestly report that we dried it out too much. Not to worry though because there's always next year!

-MATT

Great Ways To Continue To Support RTLC and our Ministries

The support of our donors is key to our ministry thriving and growing. There are a multitude of ways that you can give to this ministry. Stocks, checks, online, and gifts to specific projects like the land exchange or camperships are just a few. However, there are some other tools available of which you may not be aware.

If you own an IRA and are over the age 70 1/2 you may be eligible to make a Qualified Charitable Distribution (ie a contribution to RTLC) directly from your IRA and not include the amount given as subject to income tax. Because of recent law changes, it is always good to consult your tax advisor, but if you are eligible for this, it is a very good deal!

Donor Advised Funds (DAFs) are tax-advantaged investment accounts used for charitable giving. You can fund a DAF with cash or other assets and take a tax deduction for doing so. Usually people opt to contribute their appreciated investments so they don't have to face the tax consequences of selling it themselves. Once inside the donor-advised fund, your contributions continue to grow tax-free until you elect to issue a grant to the IRS-approved charity of your choice.

The beauty of donor-advised funds is they're available to anyone. Donor-advised funds are "designed to be a simple, turnkey way to execute your philanthropic wishes, whether you're giving \$500 or several million." You can give as much or as little (as long as it's at least \$50) as you want to one charity or dozens whenever you choose. It's for this reason that Van Sant calls donor-advised funds "flexible philanthropy."

Take advantages of these tools to help our ministry grow. Talk with your financial advisor for more details. Or contact Dave at dave@rainbowtrail.org and he can put you in contact with someone that can help.

ORDER RAINBOW TRAIL BLEND FOR YOUR CHURCH!

Tired of Folgers? You can order 5 pound bags of delicious, fresh-roasted, whole bean or ground Rainbow Trail Blend coffee online! What's even better is that all profits of RTLC's unique coffee blend provide funds for kids to come to camp! Start ordering delicious coffee with a purpose for your congregation today by going to shop.rainbowtrail.org!

The 20th Annual Grace Race

Save the Date: Grace Race is Saturday, October 3rd, 2026



The date has been set! Plan on joining us on Saturday, October 3, 2026 for the 20th Annual Grace Race for World Hunger. The race will begin at 4 pm with check-in beginning at 2:30 pm. We will have our post-race party including grilling burgers and our awards ceremony. We will also announce the winner of "The Fleetest Flock" trophy, a traveling trophy for the congregation with the most participants. Last year, Cross of Christ in Broomfield won the Fleetest Flock again! It has been five years in a row. Someone needs to challenge them! We are once again partnering with the Rocky Mountain Synod World Hunger appeal. This will be a great way to get outside, get some exercise, and make a huge difference. Can't wait to see you all there to support the World Hunger Appeal. We're hoping to have 300 runners and to raise \$10,000 again this year for World Hunger.

GIFTS IN MEMORY & HONOR

In memory of Sandy Elvington

- Allen Kamin
- Amy Downey
- Angie Alves
- Anita and Matthew Seitz
- Anita Giesick
- Ann Hultquist and Roger Loots
- Anne and Jim Jahnke
- Anonymous
- Carson Moran
- Charlotte Bell
- Chip Heginbotham
- Chris Keller
- Christy Confetti Higgins
- Dave and Nellie Jarvis
- Deb and Joe Darschewski
- Dennis and Kaaren Bergstrom
- Doris and Robert Dittmer
- Edie Mitchell
- Gary and Kay Landers
- Gerald Mead
- Gloria Albright
- James and Karen Garrett
- Jana and Matthew Porta
- Janette Dorssom and John Giannangeli
- Juergen Fleischer
- Julia Szabo
- Julie and Jason Becker
- Julie Simon Bailey
- Justin Higa
- Kathy and Tim Armstrong
- Kevin Lindley
- Kristian Neira
- Latha Gangadharan
- Laurie and Jerome Bourgeois
- Lisa Meyerdierks
- Lorene Lybbert
- Mary Ellen Kassotakis
- Michael Friedman
- Molly Malloy and Jane Walsh
- Nicholas Karabin

- Patti Falbo-Toupin
- Ralph and Barbara Dehnert
- Ray and Nicole Ferry
- Resolute Wealth Partners
- Robert Lusk
- Rose Durcan
- Scott Elvington
- Sharon McDaniel
- Sheryl Collins
- Stephanie Courtois
- Steve and Debbie Selle
- Tammy and Paul Felts
- Tom Wolgamot
- Trey Marshall
- Tyler Miller
- Valerie Grantham

In memory of Breonna Hoffer

Cindy Weist

In memory of Carla Turner

Deborah and Jerry Yirku

In memory of Chuck Aigner

Charles and Cathy Aigner

In memory of Kelsey Rohrbaugh

Anonymous

In memory of Kimberly Jude Jackson

Dee and Robert Jackson

In memory of Rose Heffernan

Michael Heffernan

In honor of Pastor Nicole Ferry

Julie and Jary Shimer

In honor of Dave Jarvis retirement

Vicki and Christian Lieber

CONTRIBUTORS

- Allen Kamin
- Amy Downey
- Angie Alves
- Anita Giesick
- Anne and Jim Jahnke
- Bobbie Anderson
- Carson Moran
- Charles and Cathy Aigner
- Charlotte Bell
- Chip Heginbotham
- Chris Keller
- Christy Confetti Higgins
- Dale and Jan Ydstie-Roy
- Dan and Marcia Bollman
- Debra and Joe Darschewski
- Dennis and Kaaren Bergstrom
- Diane Frederick
- Donna Skovgaard
- Doris and Robert Dittmer
- Edie Mitchell
- Frederick and Susan Bachman
- Gary and Kay Landers
- Gerald Mead
- Gloria Albright
- James and Karen Garrett
- Jana and Matthew Porta
- Janette Dorssom and John Giannangeli
- Jennifer Ridler
- Juergen Fleischer
- Julie and Jason Becker
- Julie Simon Bailey
- Justin Higa
- Kevin Lindley
- Kristian Neira
- Latha Gangadharan
- Laurie and Jerome Bourgeois
- Libbie and Mark Reinking
- Lisa and Mike Regennitter
- Lorene Lybbert
- Mary Ellen Kassotakis
- Melissa Billiard
- Molly Malloy and Jane Walsh
- Nicholas Karabin
- Nick and Kristine Moucha
- Patti Falbo-Toupin
- Resolute Wealth Partners
- Robert Lusk
- Ryan Mendez
- Sharon McDaniel
- Sheryl Collins
- Stephanie Courtois
- Steve and Debbie Selle
- Susan and Brenda Zimmer
- Tammy and Paul Felts

SAVE THE DATE:

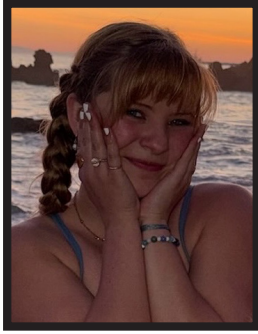
Support RTLC on the 16th Annual Colorado Gives Day on Tuesday, December 8, 2026. Save the date! Coloradans will come together again to raise millions of dollars for nonprofits like Rainbow Trail. Last year, a remarkable \$56.6 million was distributed to 4,600 Colorado non-profits. RTLC raised an incredible \$212,017 in that 24-hour period. With the support received in 2025, we have set a goal for 2026 of \$200,000! All funds raised will go towards our Annual Fund. Our annual fund sustain our day-to-day operations. Mark your calendars and make a difference!



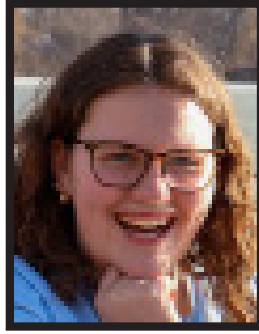
Now THIS is What You've Been Waiting for...



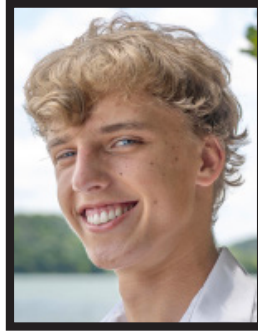
Becca Schatte
Bridging Borders Director
Valparaiso University
Jefferson City, MO



Anna Schatte
Counselor
Concordia University Irvine
Irvine, CA



Sylvie Gunnlaugsson
Counselor
Northwestern University-St. Paul
Hudson, WI



Ethan Chapman
Camphand
Green Hill High School
Old Hickory, TN



Addison Short
Counselor
Iowa State University
Rochester, MN



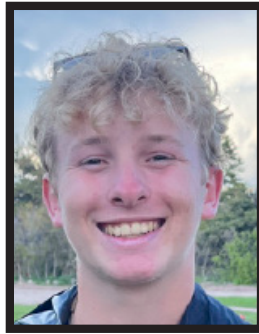
Alex Gould
Counselor
Colorado State University
Colorado Springs, CO



Cat Hammond
Summer Head Cook
Colorado Springs, CO



Alex Brown
Maintenance Assistant
Grand Canyon University
Arvada, CO



Zach Burggraaf
Bridging Borders Director
University of Iowa
Iowa City, IA



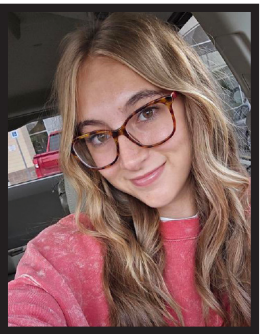
Elsa Nelson
Summer Onsite Director
UW Platteville
Dodgeville, WI



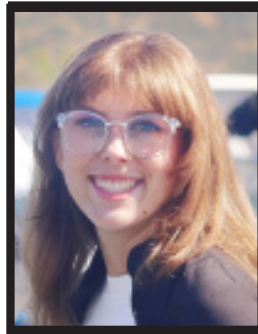
Georgi Ward
Counselor
Colorado State University
Fort Collins, CO



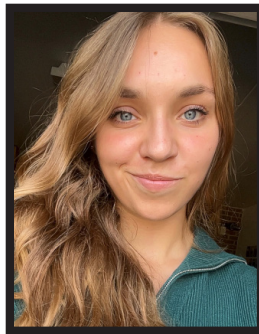
Haydon Everts
Travel Support Director
Colorado State University
New Braunfels, TX



Katelyn Jaster
Counselor
Valparaiso University
Centennial, CO



Julia Powell
Videographer
CSU - Pueblo
Pueblo West, CO



Denali Rusch
Counselor
Augustana University
Custer, SD



Brenton Albances
Counselor
Dundas Valley, Australia



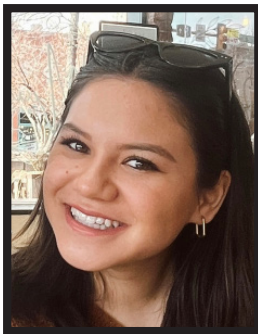
Bjorneby Beckman
Camphand
Chaparral High School
Parker, CO



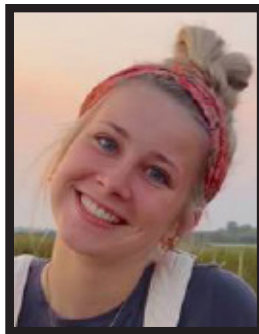
Talia McLaren
Counselor
Keene State College
Albuquerque, NM



Savana Thomsen
Counselor
University of Wisconsin-Madison
Dorchester, WI



Isabela Ko
Counselor
Colorado State University
Lakewood, CO



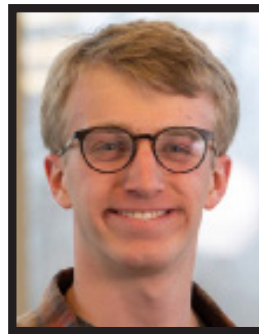
Katherine Klavetter
Counselor
University of Wisconsin-Madison
Rochester, MN



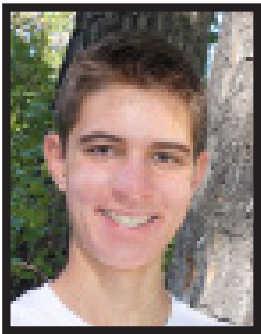
Andrew Sather
Counselor
Missouri University of Science & Tech
Seguin, TX



Matthew Peterson
Camphand
Grandview High School
Aurora, CO



Ben Thompson
Pottery Instructor
St. Olaf College
Northfield, MN



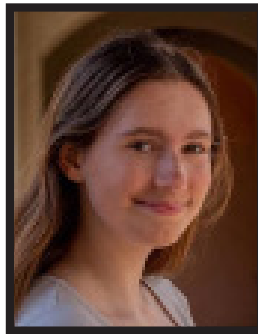
Noah Blom
Counselor
St. Olaf College
Parker, CO



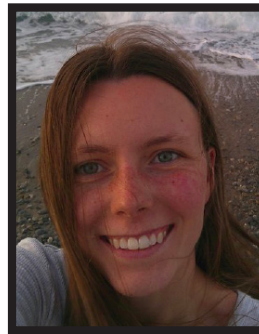
Nicole Siegler
Counselor
Carnegie Mellon University
Littleton, CO



Nora Engel
Counselor
University of Miami
Littleton, CO



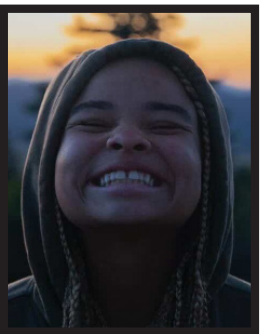
Brianne Engel
Summer Facilities Director
Rollins College
Littleton, CO



Kathryn Smith
Ropes Coordinator
Depauw University
Englewood, CO



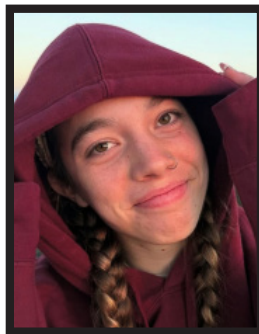
Syd Raley
Arts & Crafts Instructor
Luther College
Eden Prairie, MN



Serenity Rosier
Woodcarving Instructor
Rollins College
Tallahassee, FL



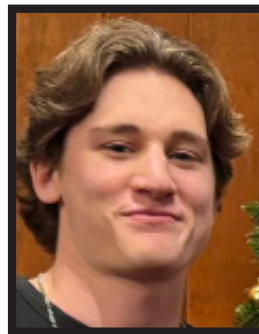
Soren Obermueller
Counselor
St. Olaf College
Dubuque, IA



Isabella Peterson
Camphand
Chatfield Senior High School
Littleton, CO



Blake Haggengjos
Camphand
Chatfield Senior High School
Littleton, CO



Jackson Dalen
Support Staff Director
RTL University
Underwood, IA

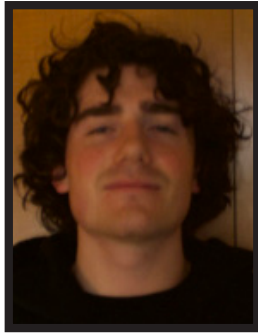


Ava Dalen
Counselor
Wartburg College
Underwood, IA

...The 2026 Rainbow Trail Summer Staff



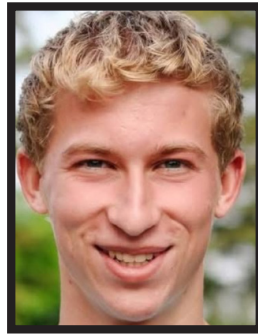
Naomi Rediger
Counselor
University of Iowa
Lino Lakes, MN



Patrick Murtagh
Counselor
Wartburg College
Colorado Springs, CO



Violet Conley
Counselor
University of Arizona
Shawnee, KS



Broderick Hansen
Counselor
MSU - Moorhead
Moorhead, MN



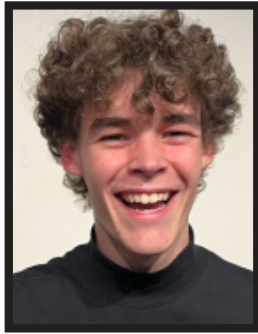
Wes Theuret
Ropes Coordinator
Texas Lutheran University
Kenedy, TX



Maren Massie
Office Assistant
University of Colorado-Boulder
Denver, CO



Addie Flesch
Compass Points Director
St. Olaf College
Englewood, CO



Abel Gamelin
Bridging Borders Director
Roanoke College
Littleton, CO



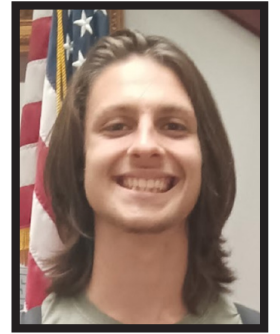
Roman Gamelin
Counselor
Valparaiso University
Littleton, CO



Nancy Phillips
Counselor
University College Cork
Littleton, CO



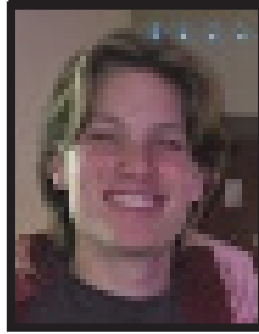
Grace Percy
Counselor
Roanoke College
Gainesville, VA



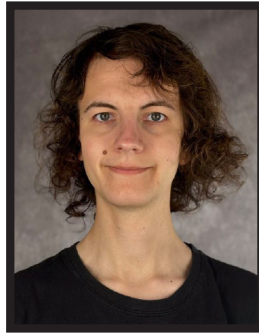
Sadler Clifford
Assistant Cook
University of Central Florida
Tallahassee, FL



Sophie Fowler
Guitar Instructor
University of Nebraska-Lincoln
Centennial, CO



Thomas Fowler
Counselor
University of Nebraska-Lincoln
Centennial, CO



Ash Hammond
Kitchen Assistant
Western Governor's University
Colorado Springs, CO



Ethan Hammond
Maintenance Assistant
Lake Academy
Colorado Springs, CO



Amanda Grutzius
Camp Nurse
Plainfield, IL



Matt Turman
Director of Site &
Facilities
Westcliffe, CO



Will Johnson
Director of Compass Points &
Day Camp Ministries
Westcliffe, CO



Dave Gunnlaugsson
Executive Director
Westcliffe, CO



Tricia Lindsey
Executive Secretary
Cañon City, CO



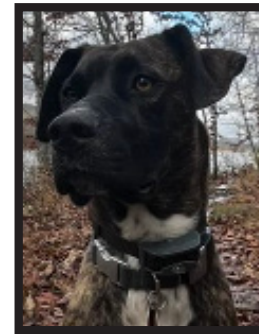
Ruth Bolkema
Bookkeeper
Cañon City, CO



Penny
Welcome Committee
Colorado Springs, CO



Cam Regennitter Assistant Director
Colorado Springs, CO
Delta Regennitter Director of Retreat
Ministries
Colorado Springs, CO
Pierce Regennitter Intern
Colorado Springs, CO



Norman
Welcome Committee
Westcliffe, CO



Program Assistant

Internship Positions

**A
V
A
I
L
A
B
L
E**

The Program Assistant (PGA) internship is designed to equip and nurture young adults interested in full-time Outdoor Ministry through experiential learning and professional development.

- > Retreat Hosting, Promotion, Recruiting, Administrative, Special Events
- > Training sessions each month lead by Full Time Directors to enhance practical experience
- > Training Topics Include: Philosophy, Budgeting, Staffing, Program Development, Marketing, and more!
- > 9 Month (late August-early May) Commitment
- > Lodging, Food, Bi-monthly Stipend
- > Apply for the 2026-2027 season on our website. Applications due February 28th!



Into The Wilderness

By Will Johnson - Director of Compass Points & Day Camp

What's up y'all! Happy Spring! It's been a wonderful spring here in Westcliffe as the weather has started to warm up and I couldn't be more thankful for the opportunity to live in such a beautiful place! The Wet Mountain Valley this time of year is truly a special place!

This Spring has been an awesome one! In March I got to enjoy a long weekend with my brothers, Grant and Caleb, where I taught them how to fly fish! We spent 1 day float fishing on the Arkansas river going through Salida, another day wade fishing in Browns Canyon, and the third day wade fishing up above Salida. It was an awesome trip and we caught tons of fish! I'm super grateful for the opportunity to get them up here all the way from Texas and show them more of the beautiful state I get to live in every day.



Outside of that trip I've had some great opportunities to get my raft out with my roommate Matt and got to explore some new fishing spots as well! It's really been fun to learn how to row down the Arkansas as the flows increase and more water becomes available for floating. I'm really looking forward to taking more friends out and tying some of my own flies as well! I just received an awesome gift from my friend Bryan who gave me a whole fly tying desk and materials along with it! I've been meaning to get into fly tying but this really gave me a head start on equipment and fly tying materials so that I can tie most any fly I can find instructions on.

Looking forward to summer, we hired our staff back in the beginning of March and we are so excited about this team! We hired 2 Compass Points/travel support directors for the upcoming 12 backpacking trips we have this year. All of our guides are returning staff members so I'm very excited about the experience this team brings. Out of our 12 trips, 8 are charters from churches across the country including three charters from the church I first guided as a counselor back in 2019! I'm super excited to host them again as it feels very full circle to have them up here for the third time since I started as a counselor. The other 4 trips are our classic open trips. These include the Junior High Open, Senior High Open, Into the Wild (for graduating seniors), and our Young Adult Open! They have not filled quite yet so spread the word if you know anyone who would be interested. We also have 26 day camps this year and we can't wait to serve those congregations all across the Rocky Mountain Synod!

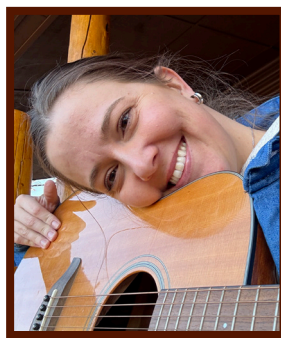
We also have some new upgrades in gear this year! We are getting some new kitchen storage for Eagle Peak Lodge along with a new stove! This will be a significant upgrade to Eagle Peak Lodge and I'm looking forward to using it to help fill the bellies of all our campers this summer! A big thank you to Steve Jurens for the new stove! Steve has a big heart for the Compass Points Program since he came here with his youth in the 90s and we are forever grateful for his generosity!

As always, all are welcome to come say hi and check out the new gear at Eagle Peak Lodge! We can't wait to see so many of y'all this summer! Happy Trails.

-WILL

Words With The Wise

By Delta Wise - Director of Retreats



Hey y'all! Are y'all ready for summer? I AM! Full-time staff is starting to get that nervous-excited feeling that rumbles in your gut as we sprint downhill into summer camp mode. We can't wait to hear the familiar sound of kids laughter alongside the strum of some acoustic guitars, to smell the ponderosa pine mixed with sunscreen and sweat (it's a very particular smell exclusive to summer

camp lol if you know, you know), to see the colors of vibrant green grass and cyan skies, and to feel our calloused hands and burnt cheeks from a full day of high ropes. Best of all, I can't wait for the taste of some good ole cowboy coffee over the fire at 6am. Sadly as you know we didn't have much of a winter this year, which means we didn't even have a 'mud season' (aka spring). So the site is dry and prematurely turning green as she awaits her afternoon summer sunshowers! There's an idiom in there somewhere. Considering this, we've been more than ready to welcome warmer temperatures. I was chatting with some river rats who say that every now and then it's just a low water summer, and that's what they're expecting this summer to be out on the Arkansas too. On the bright side we'll probably be able to peak Eagle during staff training with the lack of snow up there, and Will says fishing is better when the water is low. Either way, we'll have a great time, rain or shine.

Let me catch you up on the past three months since I wrote to you last. We hosted Joy Lutheran's usual winter men's retreat with Pastor Rod. Always thankful for those guys. Shoutout to Randy who loved to hold my then 8 month old baby as I helped prepare meals. The community of camp is invaluable to Cam and I as we raise Pierce alongside you all. Canon City came back with another group of around 150 for a winter national youth retreat. Kids from Canon City, Florence, Penrose, and the surrounding area all joined together for some worship and fellowship. Black Forest Lutheran and Ascension Lutheran both held family retreats for their churches which I always highly recommend for congregations. I watch in real-time people who have sat near each other in services every Sunday for years get to know each other a little better than before. Coming up, Bethany Lutheran in Denver will have a family retreat here in the next couple of weeks too! We're excited for those guys to come back up like they used to annually. We've honestly had quite a few summer staffers discover camp by coming to the retreat with Bethany when they were younger. I'm sure I can speak for all of RTLC when I say we really value our partnership with congregations, especially during retreat season, and the wonderful staffers they introduce us to. Full-time staff will also recertify on our ropes course soon with a rigorous written test and physical evaluation on the actual course itself. That's about a full day if not two day process. And finally our Board of Directors will have a board meeting here at camp for a few days as well. This all happens within the next three weeks and then on May 18th summer directors move in and thus begins summer training!

Pierce will be at camp a majority of the time this summer which I'm so excited for. He turns one on May 10th! I can't even fathom that a year ago I was about to give birth and now I have the opportunity to bring my one year old to summer camp for three months. If I may, I'd like to reach out to y'all in prayer request for Pierce. He is having some motor delay and is in physical therapy twice a week. In my mind, I picture him trying to take his first steps this summer out on the mall in front of Aspen. And I can't wait for that moment when it comes. Cam and I are also beginning the process of looking to buy our first home. We've been living with his parents for almost a year now, saving as much as possible. We're hoping and praying to cross that bridge in August. But in the meantime, what a blessing it is to be able to stay at camp for the summer. I can't wait to see you all then!!

-Delta

Want To Make A Difference?

Give a gift to Rainbow Trail and invest in the faith lives of thousands of kids. In today's economy there is no better return!



www.rainbowtrail.org
Online Anytime

TRAILBLAZERS & PATHFINDERS

The following individuals are members of the 2026 Trailblazers and Pathfinders Club. Trailblazers is an annual giving club that keeps the ministry at Rainbow Trail alive and growing. To join, contact Dave 719-276-5233 or check out the "Donate" tab on our webpage at www.rainbowtrail.org. Many thanks to the following supporters of Rainbow Trail!

Base Camp Club

\$120-\$249

Alan and Susan Shelinbarger
Amanda Howe
Anita and Matthew Seitz
Annie and Kevin Pepper
Anonymous
Aurice and Bob Worley
Barbara and Chuck Exley
Ben and Jordan Jarvis
Ben and Katie Rude
Beth and Dave Newsom
Beth and John Turman
Bob and Linda Morton
Brad and Brooke Shannon
Brian Niess and Anne Bliss Niess
Bruce and Laura Guthals
Bud and Kim Smoot
Candy and Larry Ourada
Carol and Greg Smith
Chris and Alyssa Lovagnini
Christen and Andrew Brown
Christina Brown-Erickson and Steven Erickson
Christine Gerbig
Christy Klemz
Clarence Ver Sluys
Corey and Katie Okes
David and Ingrid Waggoner
David Kumpe and Rosemarie Wipfelder
Kumpe
Delbert and Shirley Grauerholz
Denise and Scott Ikenberry
Dennis and Marie Ammon
Dennis and Nancy Johnson
Donna Hayden
Duane and Pam Wagner
Ellen Riley
Erik and Kim Bell Williams
Ethan Roberts
Gary and Joy Symes
Hal and Shirley Nilsson
Heather and David Kinz
Jacob Dolan and Becca Sager Dolan
Jan and Derald Hurlbert
Jay Ackland
Jennifer Newman and David Engel
Jessica and Jesse Reeves
Jim and Bonnie Shumaker
Jim and Laura Lewis
Jonathan and Jennifer Von Stroh
Joseph Parker
Joyce Mills
Judy Leiseth
Julia Cooley
June Hartmann and Allan Ochs
Karen Witt and Jim Puga
Kari and Mitchell Kusek
Katie and Daniel Scherr Bock
Keith and Nan Lomen
Keith and Tammy Wetter
Kelly and Thomas Ingebritson
Ken and Mary Sorenson
Kirk Dugan and Rachael Lanning
Kristin McCracken
Laura Harney and Eric Sollenberger
Leah Jarvis
Leif and Peggy Ericson
Lisa Rogowski
Mande and Spencer Mathews
Marion Talley
Mark and Angie Hartman
Mark and Heidi Peterson
Mark and Sarah Fincham
Marty Bendel Waite
Mary Elmshausen
Michael Heffernan
Mike and Jenny Kelley
Paul and Kathy Casey
Paul and Tanya Trana
Ralph and Barbara Dehnert
Rebecca and Paul Marsh
Richard and Elaine Simonds
Rod and Sharie Schofield
Sara and Clark Olson-Smith
Sharon and Bruce Stokes
Steve and Judy Gunnlaugsson
Steven and Debra Kinz
Susan Pfabe-Wiggans and Scott Wiggans
Terry and Holly Wubbena
Tiffany and Kevin Roiseland
Todd and Christine Wright
Tom Berardinelli
Rainbow Lake Club
\$250-\$499
Addison Andrix and Carley Malm
Alissa and Josh Plumley
Amy and Alan Schmuck
Ann Wachholz
Anonymous
Ben and Corliss Wyatt
Bob and Janelle Stover
Brad and Kathleen Chewakin
Caitlin and Joshua Nelson
Carl and Gail Schurman
Cathy Goodman

Cheryl Masters
Chuck and Gayle Newell
Cordell and Patricia Halverson
Cyndi Gershenoff
Damon and Anna-Marie Larson
Dan and Liz Burris
Daniel Kirschbaum
David Dorow and Wendy Clark
David Miller and Anne Wenzel
David Price
Dawn and Shannon Ambrosio
Deborah Wangerin
Dena Richter
Gene and Angie Youngmann
Greg and Jessica Dorow
Hans and Kristin Wiersma
Heather Dahms and Joey Henke
Ina Kay and Tom Devers
Jack and Phyllis Brown
Jana and Paul Oman
Jane Jebson
Jim Ruden
Joanne and Jim Dumler
John and Peggy Harris
Joyce M. Schmidt Living Trust
Kalie Saathoff
Karel and Tom Hemler
Ken and Kay Gerhart
Landon Harman
Lannette Abbey
Larry and Eleanor Bonicelli
Linda Drury
Lynda Keeley
Mark and Julie Stover
Mark and Natalie Talley
Mark Skinner and Lou Ann Cheslock
Skinner
Melissa and Michael Ackermann
Micah and Donna Hartung
Michelle Stone Kraus and Arthur J. Kraus
Mindy and Aaron Lerch
Nancy Henning
Nancy Skinner
Phil and Dee Erlander
Ray and Carrie Harney
Richard and Valerie Watkins
Rick and Becky Romano
Robert and Mary Ann Apmann
Robert Lee and Polly Ann Miller
Ron and Katy Harder
Ruth Idler
Sara and Daniel Romanski
Scott and Elizabeth Wertz
Silje Ostrem
Stacey Aurzada
Steven and Pamela Haigh
Tasha and Matt Friedell
Tom Wolgamot
Eagle Peak Club
\$500-\$999
Abby Mudgett
Anonymous
Ashley Kelley
Audrey and Wade Beckman
Ben Hogue and Marshall Monda
Beth and John Rogers
Bill and Shelly Hunter
Brian and Marisa Carlson
Carl and Katie Edstrom
Carol Donachy
Carolyn Brink
Chuck and Michelle Nichols
Cindy and Mark Boatright
Clint and Anne Pluenneke
Craig Kelly
Daniel and Diana Breed
Daniel Hanson and Aimee Lenth
Dave Gunnlaugsson
David and Linda Higbea
David and Michelle Louis
Donald and Joyce Stephens
Douglas and Naoko Kohlhepp
Elisa and Ryan Strickler
Gail and Craig Bagenstos
Gary and Patty Bliss
George and Nancy Jacobson
Greg and Barbara Haschke
Heidi and Greg Thiele
Jane and Steven Massie
Jeff and Trisha Carlson
Jessica and Todd Doyle
Jim and Jann Marie Crock
Jim and Pat Speckmann
Joanne Parkhouse and Zhihua Song
Joel and Carolyn Buck-Gengler
John and Kathleen Erickson
Jon and Jo Powers
Judy Peters
Julie and Jary Shimer
Julie Prange
Karen and Richard Stenger
Kate Tjeerdsma Betzel and Filipe Betzel
Katherine Graham and Justyn Hamilton
Kathryn Schmidt
Kelly Knupp and David Fox

Kendra and Steve Dunn
Kent and Elizabeth Lund
Kim and John Olson
Kim KJ Cedar Jackson Endowment Fund
Kimberly and Chris Sandman
Leslie Swetnam
Lynn and Pat Trena
Maren Diercks and Paul Eppard
Marilyn and David Meline
Marje and Fred Hoppe
Mark and Anne Schwartz
Marsha Yosten
Mary Ann Woodward
Melissa Beaman
Melissa Chepulic
Nick and Jessica Ehrhardt
Pam and Dave Challis
Patti Nelson
Peter and Pat Holwerda
Rebecca and Rich Collins
Rena Deharde-Haes
Robert Rhodes
Ron Yergert
Roxann and Tom Hare
Russ and Cheri Sorensen
Ryan and Rianne Anderson
Scott and Kristi Beebe
Stephanie and Nathan Salazar
Stephanie Lord and William McHardy
Steven Gustafson and Beth Knutson
Suzanne and Clay Johnson
Teak and Clifford Simonton
Terry and Susan Pletkovich
Tim Hoops
Todd and Mary McNeil
Tom Williamsen
Trevor Alm
Tyler Miller
Vince and Leigh Felletter
Walter and Karyl Meyer
Zachary Lampe

Challenger Peak Club

\$1,000-\$1,499

Adrian Miller
Andrew Sather
Anonymous
Betty Kirsebom
Brad and Emma Dausses
Bradley and Roseanna Doty
Chris and Stephanie Frankle
Cindy Weist
Dave and Betsy Risendal
Dave and Carol Hartenberger
Delores and Gerry Mueller
Elizabeth and Jeff Thomas
Estate of Mardella Buhr
Evan and Beth Smith
Fred and Audrey Hansen
Gary and Kay Schritter
Gloria and Joel Friesenegger
Hanne and Kip Schauer
Harold and Susan Stitt
Hunter and Janet McDaniel
James Myra
Jay and Tia Gamelin
Jerry and Diane Miller
John and Pam Marietta
Julie and Scott Miller
Karen Pforr
Kevin and Janet Flesch
Kevin and Tracey Engelhardt
Kiara and Andrew Jorgenson
Kris and Greg McDaniel
Larry and Lavona Brown
Laura Wouters
Lisa and Kevin Conley
Mary Koepp
Michael and Zoe Bergner
Nancy Lord
Orla O'Callaghan and Paul McCarthy
Peter Meyer and Kyra Jensen Meyer
Randy and Marilyn Williams
Rebecca and Jason Powell
Rick and Angela Guinn
Rick and Sherry Smith
Roger and Claudia Larson
Ruth Von Mosch
Shirley Pettigrew
Stanley and Evelyn John
Long's Peak
\$1,500-\$2,499
Amy and Matthew Pallas
Anonymous
Arthur Norman and Lisa Lennon
Ben Hizer
Ben Spiger and Kendra Wilde
Cheryl and Stephen Mahon
David Lee and Lisa Brown
Eric and Elizabeth Berrill
Holly and Nick Massie
Jay Davis
Jim and Cindy Britton
John Rasmussen
Kathy and Craig Twaddell
Kathy Gash
Ken and Sheryl Mielke
Kristin and Christian Nisonger

Kurt and Marsha Ehrhardt
Lisa Meyerdierks
Liza and Nathan Blom
Marcus and Liz Kochis
Matthew and Sami Meline
Paul and Lisa Smith
Payton and Grace Waggoner
Ray and Nicole' Ferry
Roger and Alice Aden
Roger and Cheryl Thompson
Roger and Mary Riekema
Rosetta Bidne
Scott and Emily Dalen
Seth and Marianne Prochaska
Severt and Mary Kvamme
Sophia and Nick Hassman
Tom and Shari Gould
Vicki White
William Ernstrom and Janie Hanson-
Ernstrom

Mt. Elbert

\$2,500-\$4,999

Ann Hultquist and Roger Loots
Annie and Jeff Heath
Anonymous
Austen and Christina Smith
Bob and Joyce Witte
Carl and Emily Sauey
Cathy and Bill Goss
Charlie and Claire Pineda
Cindi and Mike Mathes
David and Sharon Henneke
Dee and Robert Jackson
Don and Lillian Filegar
Edwin and Carleen Woolley
George and Norine Kerstein
Janice and James Mulvany
Jason Davis and Kellie Lisi
Jill and Douglas Monsen
Kathy and Dirk Hogue
Kim and Dave Guinn
Mackenzie and Jonathan Swanson
Marcia and Bill Smith
Mia and Scott Harberts
Pat Holman and Phil Wangberg
Randall Toney and Koren Holden
Rick and Charlene Coulson
Robert and Ann Erickson
Shanna and Ryan VanderWel
Stephanie and Andrew Holloway
Susan and Dave Fisk
Wendy and Glenn Kuzminski

Mt. Princeton

\$5,000-\$9,999

Brad and Carissa Nietfeldt
Brenda and Lon Sears
Cheryl Jebson
Dave and Nellie Jarvis
David and Edie May Phillips
Dawn and Brent Meyer
Janet and Scott Harrison
Janice Ehlers
John and Laura Hyten
Julie Reusser
Karen Smith
Kris Ericson
Mark and Carla Ewing
Miles and Kim Brown
Nathan and Laura Cooper
Paul and Kathy Edstrom
Phil and Traci Dorth
Ron and Jean Bruns
Shelly and Gerry Clemen
Steve Jurrens
Tom and Alison Buckett
Vicki and Christian Lieber

Crestone Peak

\$10,000-\$14,999

Bob and Andrea Mooney
Jim and Carol Reppert
Kate and Eric Waggoner
Katie Dugan
Michelle and Dave Okes
Paul Schauer
Steve Flessner
Tara and Chad Sawinski
Pikes Peak
\$15,000-\$19,999
Dave Young

Mt. of the Holy Cross

\$20,000 plus

Anonymous
Bill and Charlotte Dausses
Bob and Margie Dugan
Randy and Lisa Schrader
Richard Newman
The Estate of Lois and Orvid Olson
Scott Elvington



Rainbow Trail

2026 Events Calendar

- May 24-25.....Memorial Day Work Weekend
- May 25-June 6.....Staff Training
- September 4-6.....Labor Day Family Weekend
- September 17-20.....Men's Fly Fishing Retreat
- September 25-27.....Womens Retreat
- October 3.....Grace Race
- October 9-11.....Confirmation Retreat
- October 16-18.....Fall Ambassadors Retreat
- November 20-22.....Senior High Retreat
- Dec 4-6.....AdventFest

DESIGNATED GIFTS

- Cheryl and Stephen Mahon - Soker Campership Fund
- Steve Jurrens - Kitchen Supplies
- Steve Jurrens - Blackstone for Compass Points
- Steve Jurrens - Staff Appreciation

ORGANIZATIONAL GIFTS

- Benevity Community Impact Fund
- Cross of Glory Holy Closure
- Expeditors International of Washington, Inc
- Martin/Martin
- Naos Design Group
- Mount Calvary Legacy 125 Endowment Fund
- Scheels
- St. Andrew Lutheran Church Legacy Fund
- St. Andrew Lutheran Church Endowment Fund
- Thrivent Financial

PARTNER CONGREGATIONS

- Abiding Hope Lutheran Church, Littleton, CO
- All Saints Lutheran Church, Albuquerque, NM
- Ascension Lutheran Church, Colorado Springs, CO
- Atonement Lutheran Church, Boulder, CO
- Augustana Lutheran Church, Denver, CO
- Bethany Lutheran Church, Cherry Hills Village, CO
- Bethany Lutheran Church, Fredericksburg, TX
- Bethel Lutheran Church, Aurora, CO
- Bethel Lutheran Church, Colorado Springs, CO
- Bethlehem Lutheran Church, Longmont, CO
- Bethlehem Lutheran Church, Los Alamos, NM
- Black Forest Lutheran Church, Colorado Springs, CO
- Christ the King Lutheran Church, Colorado Springs, CO
- Christ the Savior Lutheran Church, Aurora, CO
- Christ the Servant Lutheran Church, Louisville, CO
- Cross of Christ Lutheran Church, Broomfield, CO
- Cross of Hope Lutheran Church, Albuquerque, NM
- Evergreen Lutheran Church, Evergreen, CO
- Faith Lutheran Church, Golden, CO
- First Lutheran Church, Colorado Springs, CO
- First Lutheran Church, Lake City, MN
- First Lutheran Church, Longmont, CO
- First Lutheran Church, Sioux Falls, SD
- Good Shepherd Lutheran Church, Glenwood Springs, CO
- Grace Lutheran Church, Colorado Springs, CO
- Holy Cross Lutheran Church, Wheat Ridge, CO
- Holy Ghost Lutheran Church, Fredericksburg, TX
- Holy Love Lutheran Church, Aurora, CO
- Holy Shepherd Lutheran Church, Lakewood, CO
- Holy Trinity Lutheran Church, Littleton, CO
- Immanuel Lutheran Church, Greeley, CO
- King of Glory Lutheran Church, Arvada, CO
- King of Kings Lutheran Church, Pueblo, CO
- Lord of the Hills Lutheran Church, Centennial, CO
- Mount of the Holy Cross Luth Church, Vail, CO
- Our Saviour's Lutheran Church, Ft. Collins, CO
- Rocky Mountain Synod ELCA, Denver, CO
- Shepherd of the Hills Lutheran Church, Canon City, CO
- South Zumbro Lutheran Church, Kasson, MN
- South Zumbro Lutheran Church WOW, Kasson, MN
- St. Luke Lutheran Church, Albuquerque, NM
- St. Mark Lutheran Church, Aurora, CO
- St. Paul Lutheran Church, Calhan, CO
- St. Peter Lutheran Church, Greenwood Village, CO
- St. Philip Lutheran Church, Littleton, CO
- Trinity Evangelical Lutheran Church, Boulder, CO
- Trinity Lutheran Church, Fowler, CO
- Trinity Lutheran Church, Monument, CO

ANN (JARVIS) SMITH MEMORIAL LAND EXCHANGE FUND

- Anonymous
- Edwin and Carleen Woolley
- Rick and Sherry Smith
- Carol and Paul Tveit
- Paul Schauer

A different, yet significant way to support the ministries of Rainbow Trail

Needs List



These are essential items needed for our day-to-day operations. A designated monetary gift would certainly be welcome as well. You can bring these items with you any time you come to camp or call us to arrange a drop-off or pick-up. Thank you for your continued support!

- White 20# copy Paper (Laser quality)
- Reams of colored copy paper
- Nalgene Water Bottles
- Masking Tape
- Scotch Tape
- Duct Tape
- Packing Tape
- Postage stamps
- 9x12 Manila envelopes (no clasps)
- 6x9 Manila Envelopes (no clasps)
- 10x13 Manila Envelopes (no clasps)
- Rain Jackets & Rain Pants
- On-Site and Compass Points Day Packs
- Foam Brushes - 1"
- Paintbrushes - all sizes, inexpensive
- 2 Cases of Lysol or Clorox Wipes
- Rubber Made Bins With Lids (10 gallon, 14 gallon, 18 gallon)

Wish List

These are larger items that we haven't budgeted for, but would love to have. Contact us if you would like to donate any of these items, new or gently used. You can bring them to camp, or call to arrange a drop-off or pick-up. Thank you for your continued support.



- Heavy Duty Cotton Work Gloves
- Sturdy Wheelbarrows
- New 3-piece towel sets (20)
- Shark Navigator vacuums (4)
- Dish Cart
- Podcast Gear
- Used Mini Van For Day Camp
- Apple Studio
- 3m kn95 industrial respirator masks (50)
- tyvek suits various sizes (5-10 of each size)
- 2", 3", 4" chip brushes (25 each or variety packs)
- floor jacks for the 15 pas vans (2) 5 ah, m18 milwaukee batteries (2)
- 3 ah m18 milwaukee batteries (4)
- 4 ah ridgid 18v batteries (4)
- loppers in various sizes (10)
- over ear protection (10)
- push lawn sweeper with 7 cu ft hopper

Shop Online

It's easy to give a gift from RTLCL's Needs or Wish Lists online. We've pre-selected items that we are looking for and provided links straight to great deals that we've found. There is also a Compass Points specific list online. You can even ship directly to us!

www.rainbowtrail.org/donate/needs-and-wish-list

2026 Memorial Day Work Weekend

Memorial Day has become as much a tradition at Rainbow Trail as anything else we do. We typically have over 120 people that come and join in this annual work weekend to get camp ready for summer. We'll be sure to have another busy and memorable weekend! The dates for 2026 are May 22-25, 2026. Call the Canon City office at (719) 276-5233 or email Dave at daveg@rainbowtrail.org to reserve your spot.



Craving Color?

Rainbow Reflections is available in a paperless, color version! Visit our website to find this edition and many previous editions of Rainbow Reflections in full color. You can also email Tricia at info@rainbowtrail.org to get on our e-newsletter list for more Rainbow Trail information!

Administrative Office

107 S. 9th Street, Suite B
Canon City, CO 81212
Phone: 719-276-5233
Fax: 719-276-5235
Office Hours: 9 am - 5 pm



Camp Office

3056 County Road 198
Westcliffe, CO 81252
Phone: 719-942-4220
Fax: 719-942-4000

Full-Time Staff

- Dave Gunnlaugson, Executive Director.....daveg@rainbowtrail.org
- Ruth Bolkema, Bookkeeper.....accounting@rainbowtrail.org
- Tricia Lindsey, Executive Assistant/Registrar.....info@rainbowtrail.org
- Will Johnson, Director of Compass Points & Day Camp...will@rainbowtrail.org
- Delta Regennitter, Director of Retreats.....delta@rainbowtrail.org
- Cam Regennitter, Assistant Director.....cam@rainbowtrail.org
- Matt Turman, Director of Site & Facilities.....matt@rainbowtrail.org

Board of Directors

- President.....Rev. Jane Jebsen, Faith Lutheran, Golden, CO
- Vice President....Rev. Nicolé Ferry, Trinity Lutheran, Monument, CO
- Secretary.....Rev. Brad Doty, St. Philip Lutheran, Littleton, CO
- Treasurer.....Austen Smith, Lafayette, CO
-Phil Dorth, Bethany Lutheran, Denver, CO
-Sophia Hassman, St. Philip Lutheran, Littleton, CO
-Kevin Flesch, Augustana Lutheran, Englewood, CO
-Rev. Steph Lord, Christ The Servant Lutheran, Louisville, CO
-Julie Miller, Bethany Lutheran, Denver, CO

We make every effort to list each donor, but mistakes do happen. If we have inadvertently omitted your name or listed you incorrectly we apologize. Please call us, 719-276-5233, and let us know so that we can make corrections.