

# FORMS FOR CAMP

HEALTH FORMS in the registration portal:

- FIRST, Complete RTLCL Online Medical Form.
- NEXT, Click Download PDFs and print 2026 Health History and Examination Form.
- Parent/Guardian: Complete and sign the 2026 Health History form. Upload the completed form to the registration portal.
- Take the page 2026 Physical Examination to a physician or APP to complete and sign.
- Upload Completed Physical Examination form to the registration portal.

IMMUNIZATION RECORDS (upload to portal):

- Colorado campers must submit the Official Colorado Certificate of Immunization or an approved alternative.
- Out-of-state campers must submit an official immunization record from their state.
- Certificates of Medical and Nonmedical Exemption must be obtained using Colorado's process and documented on Colorado's forms.

***FAILURE TO COMPLY WITH THESE REQUIREMENTS MAY RESULT IN DENIAL OF ADMISSION TO CAMP.***

ROPES COURSE is available to all junior high aged and older. To participate, please complete the online 2026 High and Low Ropes Course form two weeks prior to arrival.

RAFTING TRIPS are available for all junior high aged and older. The cost is \$85. Helmets are provided. To participate, register for this option online. Complete online 2026 Rafting form two weeks prior to arrival. Crocs may not be worn as water shoes for rafting.

**ALL FORMS ARE DUE 2 WEEKS BEFORE ARRIVAL AT CAMP!**

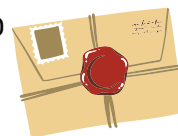
# Saturday Closing

The camp week will end about 10:00 am on Saturday. Guests are welcome to join us for closing worship at 9:30 am. Be sure arrangements are made for campers to be picked up no later than 10:30 am on Saturday morning. We ask that you refrain from bringing your pets. Thank you!

Balance of Camp fees must be received by  
May 15, 2026

TO SEND YOUR CAMPER MAIL OR  
PACKAGES THROUGH THE POST OFFICE

Camper Name  
Rainbow Trail Lutheran Camp  
3056 County Road 198  
Westcliffe, CO 81252



TO SEND YOUR CAMPER MAIL OR  
PACKAGES THROUGH UPS OR FEDEX

Camper Name  
Rainbow Trail Lutheran Camp  
3056 County Road 198  
Hillside, CO 81232

## CONTACT US

EMERGENCY PHONE 719-942-4220

To send camper E-mail:

Go to our website-[www.rainbowtrail.org](http://www.rainbowtrail.org)  
Click on the link "Send Your Camper E-Mail"



2026  
EVERYTHING

YOU NEED TO  
KNOW FOR YOUR  
WEEK AT CAMP



# WELCOME TO RTALC!

We are looking forward to your arrival and spending a great week of Christian adventure and fellowship with you. This brochure will tell you some of the things that you should know before coming to Rainbow Trail Lutheran Camp.

## WHAT TO BRING

- Water Bottle
- Insect Repellant
- Bible
- WHISTLE FOR HIKING\*IMPORTANT!
- Twin Bedding(Optional)
- Pillow/Sleeping Bag
- Casual Clothing, Shorts, Long Pants
- Sturdy Shoes and Socks for hiking
- Old Shoes or Sport Sandals for water
- Close-toed Shoes for everyday wear
- Towels/washcloths
- Flashlight
- Musical Instruments
- Swimsuit
- RAINCOAT OR PONCHO FOR HIKING
- Personal Toiletries AND Lip Balm
- Jacket or Sweatshirt
- Camera (phones may not be used)
- \$5.00 for Special Offering

# ARRIVAL AT CAMP

Registration begins at 3:00 pm on Sunday. Our staff has a planning meeting from 1-3 pm each Sunday. Registration will be held in the pavilion. Check in at the Nurse's pre-screening area.

## CABIN ASSIGNMENTS

You will not be assigned to a counselor or cabin before camp. When you arrive at camp, you will choose your own counselor on a first-come, first-serve basis. We want to encourage you to meet new friends and ask that you bunk with no more than two people you already know. If you are bunking with a friend, please plan to come to camp at the beginning of the registration time (3:00 pm) so that you can come to the registration table together and we can ensure you sign up for the same counselor. As much as we'd like to, we cannot 100% guarantee cabin mate requests. If you are coming alone, don't worry! Your counselor will make you feel right at home and you will have an instant friend!

## Facts

- Prescription and Non-Prescription Medications must be brought in original containers and given to the nurse. ALL medications must be listed on the physical form signed by a provider.
- Do not bring cell phones, electronic games, or food of any kind. Any of these items you bring will be collected when you arrive at camp and returned to you before you leave for home.

## LABEL YOUR STUFF

Please be sure that every article of clothing and every item you bring to camp is clearly marked with your name. We want everything that comes to camp with you to go home with you.

## PROTECT YOUR FEET!

Open-toed shoes such as Teva, Chaco, and Birkenstock sandals can only be worn during water activities. Crocs may not be worn for rafting. Close-toed shoes must be worn for all other activities.



## POP SHOP

You may want to put money on your account to use at the popshop for snacks or some camp swag. Your parents can pre-pay for popshop, camp photos, and a My Week at Camp video link in your registration portal. We sell these at the popshop too! We also have stamps, postcards, and batteries.

Rainbow Trail Lutheran Camp has adopted a no tobacco or controlled substance use policy for all youth campers. If you choose to smoke, chew tobacco, or vape, your parents will be notified and you will be asked to leave with no refund offered. This applies to alcohol and drugs as well. Please call the camp if you need further explanation.

## SPECIAL OFFERING

Each summer we collect a special offering. We hope that from this type of offering, kids will realize our lives as Christians reach far beyond the borders of RTALC. We hope you will encourage your camper to bring an extra \$5 or whatever they can afford to contribute to this cause.

QUESTIONS? CALL OUR BUSINESS OFFICE 719-276-5233