



Rainbow Reflections

BULK RATE
U.S. POSTAGE
PAID
CANON CITY, CO
PERMIT #30

Lutheran Outdoor Ministries of the Rockies
Rainbow Trail Lutheran Camp
107 South Ninth Street, Suite B
Canon City, Colorado 81212

Volume 23, Number 3 Fall 2011



Rainbow Trail is operated and maintained under authority of a USDA Forest Service Special Use Permit. Rainbow Trail is located in the San Isabel National Forest, USDA.

Address Service Requested

From Disaster to Miracle

It was Pentecost Sunday, June 12th, the very first day of camp. There was great excitement for greeting our first campers of the summer. Registration began at 3 o'clock. We were 5 minutes into registration when someone noticed smoke coming from the forest to the south of camp. Ten minutes later the Custer County Sheriff arrived and said we were on pre-evacuation alert. And within a half hour of beginning our summer, we were evacuating Rainbow Trail.

In the next hour, we moved 104 campers and many of their parents, 50 staff, and 3 dogs and a cat to the evacuation center in the Custer County Middle School.

We figured that we would be out of our site for a couple of days, but that we would be able to move back onto our site by Wednesday afternoon. We had already rearranged the week to go rafting on Tuesday rather than our usual Thursday in order to limit the amount of time the campers would have to spend in the Evacuation Center. We were meeting with the Forest Service right after lunch on Monday to get an update on the status of our return. It was then we found out that we would not be going back to our site at all that week. We were disheartened and deflated. So we decided we would take the kids rafting on Tuesday and have their parents just pick them up at the rafting company's office and have them go home from there. As we walked out of the meeting, the woman who was in charge



View of the smoke caused from the Duckett Creek Fire as seen from HWY 69

of the evacuation center, pointed at Dave and said, "he's the one you want to talk to."

Doug Jones, the Executive Director of Horn Creek Camp approached Dave and said, "I have a site available that will sleep 140 people, has its own kitchen and rec center - are you interested?" We weren't sure how to respond! Our hopes had been dashed not 15 minutes earlier by the Forest Service, and now we realized God had a much bigger, way different plan than any of us imagined.

We moved to Horn Creek on that Tuesday and were "Livin' on a Prayer" for the next five weeks. Daily we'd look to the fire report and were relieved to see that still no

structures had burned. As we followed the map on the IncaWeb website, there was a distinctive circle around our site. The fire had literally burned up to the edge of camp but camp had been spared. In several conversations with fire fighters, they said there is no reason our camp was still there. We believe differently. There was one huge reason it didn't burn.

The events of this summer changed our site, changed our ministry and changed us forever. But the lingering question that Doug Jones keeps asking Dave is "So what did you learn from all of this?"

This fire reinforced for us that God always has and will continue to work through people to

do His work. When we first moved into Horn Creek, Doug offered for us to stay until July 16th. Dave laughed and said, "Sure, like we will be here that long." We ended of leaving Horn Creek on July 14th. Little did we know that we would experience the grace of God over the next five weeks through the hospitality of the staff of Horn Creek, the community of Westcliffe, the workers at the grocery store, the fire fighters and the fire information officers, and even the incident commander who personally took us back into our site for the first time.

We experienced a disaster that turned into a miracle. And God was in the middle of it all. We've learned that this ministry is based on people and those relationships that are centered in Christ. We have never been a part of anything where we have felt support from all over the world. The number of prayers and notes of support was phenomenal. We were on prayer lists at churches, on radio stations, in foreign countries. It was amazing!

There are two groups to whom we want to give a special thank you. The Memorial Day crew did an excellent job of preparing our site for this summer. Little did they know that their work would be the foundation for us to being able to move back into our site so quickly. The other group was a special work day group that came in when we were anticipating returning to our site on June 26th. Though we did not move back that day, the preparation done that day cleared away much of the debris and fire related issues that would have prevented us from bringing campers back on site. So when the day came to actually move back, the transition was extremely smooth. Thanks for your sacrifice of time and for loving this ministry.

There are hundreds stories that are wrapped around this experience. We are talking about writing a book to capture all of them. Thanks for caring for us and for this ministry through this ordeal. You have all been a blessing!

Rainbow Trail says "Thank You" to Horn Creek

RTLC gives Horn Creek a \$22,000 Thank You gift

We will always remember that moment when we met Doug Jones from Horn Creek in the hall of the Custer County Middle school. When we thought we were finished for the week, Doug offered the opportunity for our ministry to continue, just at a different site. Little did we know that we would be with Horn Creek for part of five weeks of our summer. We were able to run our program, have Chris and Leah cook our fabulous food, and campers were served so well in this new environment. We even renamed the buildings to be the buildings at Horn Creek. It was almost like being home. During that time period at Horn Creek, other than ten campers that went home from the week of the actual evacuation, we had no cancellations!

The more incredible part of this story is that Horn Creek did not charge us anything to stay at their place. Their greatest concern was that ministry was continuing to happen. They were great partners with us in our ministry. They were flexible and always looked for a way to make our requests work.



Dave and Doug share memorable stories from our time at Horn Creek

We knew there was no way that we could ever repay Horn Creek for the gift that had given us for our ministry to continue to happen. As the summer progressed, we began to talk about gathering a thank you give to give to them. We had hoped to maybe raise \$10,000. Once we put the idea on the street, it literally got a life of its own. We flew past \$10,000, and then \$15,000. When it was all said and done, we raised over \$22,000.

In early October, Rainbow Trail's full-time staff invited all the staff from Horn Creek to join us for a barbeque dinner to celebrate this past summer, to reminisce, and for us to say thank you to them. Chris provided a great meal of ribs and chicken, corn on the cob, and some of her wonderful cake. It was so good to share stories, laugh, and remember all that we shared together this summer. But the highlight of the evening for our staff was the delivery of the \$22,000 check along with the list of 159 donors who gave to this cause. Horn Creek wasn't expecting anything, which made the surprise even sweeter.

We hope that our friendship and partnership of doing ministry in our valley together will continue to grow and flourish. The interns from both sites are already planning times they will get together in the coming months. Thank you Horn Creek - you are now a part of our history!

Inside this issue...

- * Meet our new Program Assistants
- * Schedule and Fees for Summer 2012
- * Grace Race Results
- * A look at Upcoming Retreats
- * A Letter from the Board President

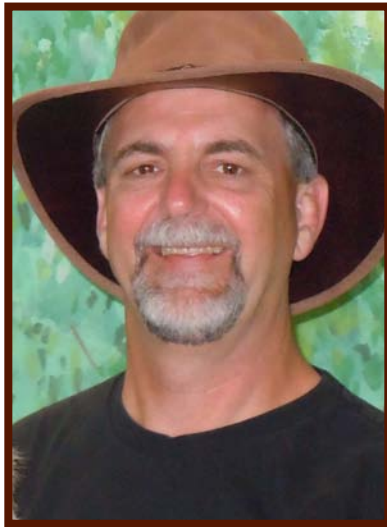
Rainbow Trail Mission Statement

Through the ministries of Rainbow Trail Lutheran Camp, God claims us, Christ transforms us, and the Holy Spirit sends us for faithful service.

Trail Boss

By Dave Jarvis - Executive Director

I have had several people that have told me that I should eliminate June from the Jarvis calendar. Seems that lots of big things continue to happen during that month in my life. This fire really rocked my world. RTLCL has really become a second home for my family. It is all that my kids know for their summers. And even the possibility that it would go away was unthinkable. But it didn't burn and we will live another day to serve. This fire has shaped all of us, in ways we don't even know yet. Even in the craziness of what this summer was, I feel blessed to have been lucky enough to be a part of leading this ministry through this summer.



In spite of the fire, this was an incredible summer. The fire got us back to the very essence of what we do. And the staff did an outstanding job with our campers, no matter what site we were on. This staff had such a huge heart for ministry and an integrity in their serving that was second to none. This staff was exceptional. One of my biggest memories of this summer will be the realization of staff once we arrived at the evac center that the only thing that had with them were the clothes on their backs and those were their staff uniforms. They were so focused on taking care of their campers that they weren't even thinking about their own needs. And there was a resilience that never allowed this staff to be beat down. They loved our campers so much and gave themselves to so many people, allowing God to use their gifts. 2011 staff, you hold a special place in my heart. I love you guys. I look forward to the conversations for 2012!

More than ever, I want to thank our Bible Study writers. This was a great study this year and I want to praise you for the excellent use of the fire as an object lesson for all of us as we spent our summer "Livin' On A Prayer". I know this was a hard study to write but it really worked! Thanks for all the extra time you commit to our ministry to make our program better. You have been a blessing to this ministry!

I also want to thank our partner congregations for their support of this ministry. These congregations have made a financial commitment to this ministry that allows us to continue to grow and serve. With the continued reductions in financial support that we have received from Synod, we have turned to our partner congregations and they have stepped up in a huge way. I so appreciate your bigger vision of the church. Thank you for seeing our ministry as an integral part of your ministry.

Finally, I want to thank all our full-time RTLCL staff for their dedication and love for their ministry. The fire could have changed our world. And this summer really could have been a disaster. But this summer was so different and so special and so amazing because of you. Ben and Ash, you continued to lead your programs with such excellence under very adverse conditions, no matter where you were. Nick, you and Kyle became the glue that helped all the plans really come together and happen. Chris and Leah, I know you had to work your magic some weeks in a very small kitchen. Kids never knew the difference. And Aurice and Sara, you both really made each week happen at Horn Creek. You were the ones who were not buried in the middle of the evacuation and had the clear heads for communications with parents and helping think about what things I was missing. I know you put in a LOT of extra hours, especially during that first week. Thanks for serving these kids and their parents in such an amazing way. Thanks to all of you for being my partners in ministry!!

Thank you all for your prayers and emails and Facebook messages and phone calls. I have never felt support like we had this summer. And thank you for loving this special place so much and continuing to be a part of it in all the ways you can. This will be a summer for the record books. But it will also be a summer where I even more clearly saw the work of God through people. Thank you all for the opportunity to serve you through this amazing place. This is how the world should be!

Until next time,

Compass Points Weeks Available!



Take an amazing faith journey this summer with Compass Points. Backpacking, rock climbing, white water rafting, and more will fill your week that is grounded in Jesus' example of going up the mountain for time of reflection, prayer, and renewal. Contact Ben at 719-431-0050 or ben@rainbowtrail.org for more information and available dates.

Compass Points 2012 Summer Dates Still Available

CALL NOW!

The 5th Annual Grace Race

Despite rainy cold weather, the 5th annual Grace Race was blessed with an incredible crowd. Those participating helped make a difference that day by raising funds for the ELCA World Hunger Appeal. Over 185 registered and came out for the race.

The top male finisher and overall fastest time yet at the grace race was Zach Parris with a time 16:19. The fastest female was Carly Gerhart with a time of 22:40. All the top times for all the age groups are posted on our website.

The final totals are not in but it looks like we will be able to send a check for about \$5,000 to the ELCA World Hunger Appeal.



The 6th annual Grace Race has yet to be scheduled for next year. We are looking into moving it to a Sunday including worship and a Huevos Rancheros breakfast. Keep you eye out for official dates. We look forward to seeing you next year!

Grace Race Sponsors

Tayco Screen Printers
 Runner's Roost
 Bethany Lutheran Church
 Luther College
 Wartburg College
 Pacific Lutheran University
 Thrivent-Garden of the Gods Chapter
 Thrivent-Twin Peaks Chapter

Wartburg College Sponsors

Wartburg College
 Kevin and Cheryl Schenk

Luther College Sponsors

Dave and Nellie Jarvis
 Andrew Peterson
 Eric Krueger
 Lauren Kraus
 Johanna Crock
 Mark and Julie Stover
 Mark and Heidi Peterson
 Ben Larson
 Kirk and Trish Neubauer

2012 Memorial Day Work Weekend

In the week after the start of the fire this past summer, while we were all busy praying for the safety of our site, one person wrote on RTLCL's facebook page: "We hope that God will protect our site. But if we lose our buildings, we'll have the biggest Memorial Day Work Weekend ever!" This is the incredible attitude that epitomizes the Memorial Day Work Weekend year after year. We thankfully don't have any buildings to rebuild next May but we will have lots of work to do. Call the Canon City office at (719)276-5233 or email Dave at dave@rainbowtrail.org to reserve your spot at this fun and rewarding weekend. If the list of projects from last year is any indication (new railings on the front Columbine stairs, a new deck at Bristlecone Lodge, a new wheelchair ramp on Golden Banner, a new ballfield trail, lots of painting and log oiling, a new cross at the Fircle, fixing up and cleaning cabins, prepping the popshop, organizing and cleaning recreation equipment, deep cleaning the kitchen...and the list continues), we'll be sure to have a busy and memorable weekend!

Register for 2012 Summer Camps

Starting November 1, 2011

Registration for 2012 opens November 1, 2011. Register early - camps will fill quickly! We encourage you to register online at www.rainbowtrail.org. You can also download the registration form and mail it in. A big thank you goes to Kat Devers and Matt Olin who used their gifts and talents to design an incredible brochure and postcard again this year! Brochures have been mailed

to congregations and postcards were mailed to all who attended camp this past summer. Family camp and Labor Day can register online as well. Registration opens on November 1st. REMEMBER - youth camps will be filled on a first come first served basis. Please don't wait to register! We look forward to spending summer 2012 with you!



2012 Summer Ben There...

Schedule

The Rainbow Trail summer 2012 schedule has been set. The fee will be \$385 for all youth camps, with the exception of Intro Camp, which

will be \$195. The week of August 12 - 18 has a special rate of \$365. Family camp fees are \$385 for adults (ages 19 and older), \$285 for teens (ages 13-18) and \$195 for ages 4-12. There is no charge for kids under age 4. **Be sure to register early!**

May 25-28.....	Memorial Day Work Weekend
May 28-June 9.....	Staff Training
June 10-16.....	Junior High #1
June 17-20.....	Intro To Camp #1
June 17-23.....	Junior #1
June 20-23.....	Intro To Camp #2
June 24-30.....	Confirmation #1
July 1-7.....	Family Camp #1
July 8-14.....	Senior High #1
July 15-21.....	Confirmation #2
July 22-28.....	Senior High #2
July 22-28.....	Open Sr. High Compass Points
July 29-Aug 4.....	Open Jr. High Compass Points
July 29-Aug 1.....	Intro #3
July 29-Aug 4.....	Mixed Junior #2/Junior High #2
August 5-11.....	Family Camp #2
August 12-18.....	Mixed Junior #3/Junior High #3
Aug 31-Sept 3.....	Labor Day Family Weekend

To find out more about these camps, our summer brochure can already be found on our website, www.rainbowtrail.org. You can also find a full set of our registration policies on our website.

Age Levels as of Fall 2012

- Intro to Camp = entering 2nd - 3rd grade
- Juniors = entering 4th - 6th grade
- Junior High = entering 7th - 8th grade
- Senior High = entering 9th-12th grade

Please note: Lutherans of the Rocky Mountain Synod, ELCA have registration priority until January 1, 2011. This applies to all camps, including family camps.



By Ben Larson - Director of Compass Points & Ministry
It's difficult to think back on the summer and not think about fire. It impacted life and ministry in huge ways, some of which we are still discovering. But, as the words of Isaiah 43 remind, or prophecy, "the flames will not all consume you." This fall two experiences have really helped me look back at the fire and see it in new ways.

The first was an airplane ride over the camp in September. Seeing camp, the burn, and the Sangres from the air was spectacular. The closeness of the burn to camp was more vivid than any of the maps I saw this summer, and brought a new reality to the power of the fire. At the same time I saw the vastness of our small mountain range and how tiny the burn was. It was a powerful reminder that even though we are small pieces of a giant world, God still loves us.

The other experience happened just a few days ago while I was giving a "Perimeter Tour" of camp. The walk around the edge of camp was a popular activity in the weeks after we moved back to camp this summer. Distinctive lines divided the burn and the green of "the bubble." Blackened hillsides, burn marks on the ground just feet away from special places in camp, and piles of cut brush were evidence of the fire and the work of the firefighters that fought hard against it. The tour I gave a couple of days ago was very different. Charred trees still remained, but I had to search for those distinctive marks and describe what had been there. Shrub oak and Aspen are coming back rapidly and the black areas are quickly being over taken by grass and the falling debris of autumn. Signs of new, and abundant, life were the highlights of this tour.

Life has been full this fall. Beth and I enjoyed a vacation to the Boundary Waters and a celebration of EWALU Bible Camp's 50th Anniversary before jumping back into our work this fall. Between her work at the flower shop and winery, and my work with retreat groups and planning for next year, we've been enjoying the fall beauty in the area on hiking and camping trips. Time moves quickly and before we know it will be time to trade the hiking boots for the skis again.

...Done That Ben

The View From Above

The Board of Directors would like to take a moment to publicly thank our Executive Director and all of our full-time and summer staff for the phenomenal way they handled the summer of 2011.

The Duckett Fire may have been the most challenging situation RTLCL has had to face in its 54-year history. The stories of God's grace and provision have been amazing, and the condition of our site is nothing less than a miracle. Countless numbers of overtime hours were put in with no additional compensation. Operating the entire office off of one folding table with a traveling white board and sleeping on a mattress on the floor was just what had to happen. But the thing many of our supporters may not get to witness, in addition to the attitude

and the hard work of our staff, is their humility and faith in God to meet all of our needs.

In order to thank Horn Creek Christian Camp for the stepping in to house us during the evacuation—allowing our ministry to continue—Dave Jarvis hoped we could ask our supporters to donate toward a gift. The bar seemed high at \$10,000, and yet the goal was met and surpassed. Our staff presented their staff with a check for \$22,000 thanks to your great generosity. Horn Creek expected nothing in return explaining, "This is what neighbors do." It is a blessing to be able to give them something back for all they've done for us.

What makes this so exceptional and impressive to the Board, is that due to many additional expenses

from the fire, insurance claims and other overruns from running 'camp' off site, our own bottom line is suffering. Our budget is challenged by almost the same amount. But acting in faith, the gift was given to Horn Creek, and our staff is putting their full faith in God to provide for all of our needs. We as a Board stand behind the decision as our staff continues to live out the summer Bible Study theme: Livin' on a Prayer, and we are humbled and honored to be serving our Lord together in the ministry of Rainbow Trail Lutheran Camp.

Michelle Okes,
President

RTLCL AMBASSADORS

Wanted: Normal, Every Day People who Love RTLCL and Want to Serve as RTLCL Ambassadors.

Ambassadors meet at RTLCL for a retreat twice a year to:

1. Find out what is new at Rainbow Trail
2. Build a display board for their congregation
3. Become equipped to pass along important information about what is happening at Rainbow Trail to their congregations.
4. Ambassadors are an important key to the ministry at Rainbow Trail.

If you are interested in becoming an ambassador for your congregation, contact Dave Jarvis at : 719.276.5233 dave@rainbowtrail.org.



ReTreat Yourself!

Family AdventFest

December 2 - 4, 2011

Don't get caught up in the hectic holiday hustle. Come get away and retreat to RTLCL and celebrate the real reason for the season: Christ. AdventFest is a great way for families to prepare for the arrival of our Lord. The worship services will focus on t



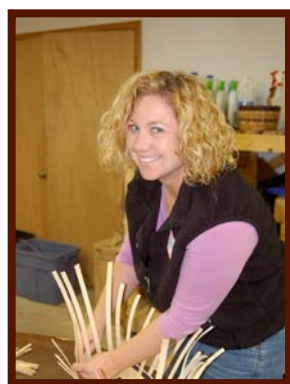
the four Sundays of Advent. There will also be time for kids and adults to create Christmas gifts or terrific Christmas crafts.

Adult crafts for this year include stained glass, wood carving, quilted pillows, woven baskets, wooden lamps, digital scrapbooking, and Christmas wreaths. Adults and kids ages 13 and older are able to participate in two crafts during the weekend. Each craft costs \$12.00 for instruction and materials. Kids Korner includes a variety of things including sledding (weather permitting), crafts, cookie baking, and games! Kids Korner is for kids ages 4-12. Babysitting will also be available during the weekend. Both Kids Korner and babysitting cost \$15.00 per person for the weekend.



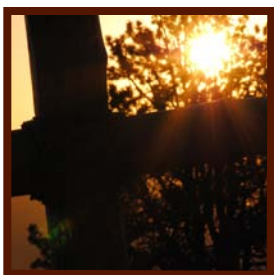
AdventFest will start on Friday evening and go through lunch on Sunday. This is a great weekend to relax and truly enjoy the season with your family. The cost of the weekend of fellowship and renewal is \$80 for adults and \$40 for kids ages 4-12. Kids 3 and under are free (crafts are additional).

Registrations are due no later than November 30. Space is limited and a 50% non-refundable deposit is due with your registration. You can now register online. Start a new family tradition!!



RTLC's Spring Women's Retreat

April 12 - 15, 2012



Calling all women of faith! Come to the Rainbow Trail Spring Women's Retreat to be inspired and empowered to step out in bold new faith adventures. Adult women of all ages will gain fresh insight and excitement for their daily journey of faith. Bring your grown-up daughters, your sisters, your mothers, or your friends who feel like family and discover a whole new set of relatives you've not yet met. This will be a weekend you won't soon forget!

Our study this spring will be led by our inspiring speaker, Michelle Okes. Michelle possesses outstanding leadership qualities and has continually touched the lives of several women throughout her time spent leading the Women's Retreats at Rainbow Trail. She offers outstanding insight into how to bring faith into our daily lives



Rainbow Trail Confirmation Retreats

November 11 - 13, 2011 and

February 24 - 26, 2012



Confirmation leaders and students: this retreat is for you! Bring your fellow confirmation class friends, a couple of adult leaders and your pastor to one of these fun-filled weekends of faith-building, worship, fellowship and play.

The subject of this year's confirmation retreats is "Spiritual Disciplines: Taking our faith from Religious to Relational". Scott Moore from Holy Cross Lutheran Church in Wheat Ridge will be leading large

group sessions helping you to explore how we need to step out in faith. Confirmation classes get a chance to discuss what they have learned with their class, and to play together in the beautiful Sangre de Cristos. Our world is hungry for Good News so come and join us on the mountain; that you may dive head first into a more spiritually driven life and take it home with you!

The cost for these retreats is \$85 per confirmation student and \$60 for each adult. You can find more information and get a registration form on the Rainbow Trail website www.rainbowtrail.org. Look under the "retreats" button or call Ash or Emily at 719-942-4220 or email them at ash@rainbowtrail.org or emily@rainbowtrail.org. Register soon as spaces are filling quickly!

Men's Adventure Camp

April 26 - 29, 2012



Jesus shows us the importance of stepping away from the world for some time with the guys. He and the disciples regularly took time away to go up the mountain for prayer, study, and renewal. In our hectic lives it is important for us, and our families, that we do the same. The Men's Adventure Camp is designed to give you that time, and the opportunity to get away from the world and recharge yourself. This action packed weekend filled with tons of adventure and inspiring worship will be held April 26-29, 2012. With a late night start on Thursday participants will be able to take advantage of two full days of activities on Friday and Saturday. The weekend will wrap up with worship and brunch on Sunday, giving you time to get home on Sunday afternoon. We think that this "extra" day is critical to allow people the chance to really relax and be able to recenter themselves for the work that God calls them to in their families and the world.

A variety of different adventure activities, including mountain biking, intro to fly fishing, archery, rock climbing, and hiking, are planned for the weekend. Worship, study, opportunities

to learn about different prayer practices and personal devotions can help you "take it down the mountain" and keep your faith alive in daily life. You'll even have the opportunity for some of our own version of Arts and Crafts --wood carving and beer brewing. With activities for all skill levels, led by experienced guides, this is the perfect time to hone your skills or try something completely new. Great food, rugged mountain scenery, and time with friends make this a time you won't want to miss! So gather a group of the guys from your congregation, or invite some from work and come out to this amazing weekend!

Contact Luke Hollander at Rainbow Trail, luke@rainbowtrail.org or 719-942-4220 for more information. We hope to see you at the Men's Adventure Camp this spring!



pASHionate

By Ashley McConnell - Director of Onsite & Bridging Borders

I am writing this to you all from the comfort of my brand new apartment. The walls are completely bare and there is very minimal decoration. In fact, the only actual thing I have hanging on my wall is the RTLC logo I got as a Kristkind gift two years ago (Thanks Brent!). There is much to be done here, but it is home. Leaning against the wall in my living room is yet another Kristkind gift I received in 2009. Engraved in it is the theme "Live In The Moment" (Thanks Jason!). If there was ever a time in my life when I, or anyone else on staff for that matter, actually lived those words out it was this summer...

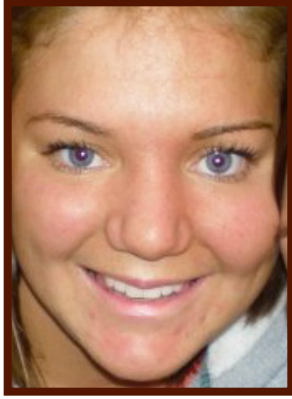
It's crazy thinking back to this summer (I still feel exhausted just thinking about it) and how as a staff we took it one day at a time. Especially after it was apparent that we would be staying at Horn Creek for a while, staff took each day and used it to its fullest to deliver the best week possible to each of our campers. I've surely seen God in other people before however, I have never seen him work through a group of people the way he did through the staff this summer. Each day it was a blessing to step out of the "command center" and see our bunch in action. Our ministry was as good if not better than it has ever been.

Getting to be a part of the Bridging Borders program was a highlight of the summer for me. We got to do amazing service in Galveston and in Ecuador. I have loved getting to know and work with this program. My first Bridging Borders trip was this summer when I traveled to Ecuador. This experience was eye opening to say the least. God worked through the staff on Bridging Borders trips every bit as much as he did through our staff onsite. There is no doubt, great ministry was done all around this summer.

Each day it is starting to look more and more like fall up at camp. The leaves are turning and remnants of the fire are harder to spot around the perimeter of the site. It's hard to believe that at one point this fire was the center of our world and now it is just a memory of the summer and yet, we are still discovering ways in which it impacted our ministry. It was great to be a part of giving the gift to Horn Creek just the other night. We got to reminisce about our time there and talk about our time there from each of our points of view. It seems as though we have formed a great partnership with Horn Creek and I am sure we will have many more nights this retreat season where we will get to enjoy spending time with their staff again.

Transitioning into the fall has been a remarkable experience. The difference in pace around the office is welcomed and it has been great getting our feet under us again. Emily and Luke are wonderful PGA's, I hope that you all get the opportunity to meet them if you haven't already. I love getting to spend "community nights" with them at camp in the middle of the week. It is a wonderful tight knit community that we have going up here. I think that is a key staple for our ministry to build from. I am eager to see where this fall and winter take us as we continue to do what we do best.

God Bless!



Rainbow Trail Welcomes Luke and Emily!

This September, Rainbow Trail welcomed two new program assistants for the 2011-2012 retreat season. We can't wait for you to meet them! They bring amazing gifts to this ministry and will be an asset to all we serve this retreat season. Come visit us this retreat season and get a chance to know these two!



Emily Kuenker and Luke Hollander, our new program assistants

Emily Kuenker

Luke Hollander

Greetings Friends!

Hello!

My name is Emily and I am one of the Program Assistants for the 2011-2012 retreat season. I am a Colorado native, having been born and raised in Aurora. After graduating from Gustavus Adolphus College in the spring of 2010, I knew I wanted to come home to my Colorado mountains. I moved to Denver and spent a year with the Urban Servant Corps working with homeless families and living in intentional community. It was a very rewarding experience and a wonderful opportunity to serve, though it was very different than the work I am privileged to do this year. I am so thrilled to be at Rainbow Trail and look forward to seeing you around the campfire!

-Emily Kuenker

My name is Luke and I grew up mostly in Iowa City with my little brother and sister, Hans and Ana, and my parents, Bill and Sara. This past May I graduated from Luther College with degrees in Biology and Environmental Science. Most of my free time was spent exploring the bluffs and streams of Northeast Iowa and participating in choirs or just making music with friends. Two summers ago I wrote a grant to do my own research on turtles in the Decorah area and learned a lot about field research and working by myself. This past summer I worked on summer staff as one of the traveling directors; it was my second summer with RTLC leaving me with many more wonderful memories and experiences. I have always been involved in ministry and plan on attending Luther Seminary after this year. I am very excited to learn more about outdoor ministry and life and spend a great year in the Mountains!

- Luke Hollander

The Program Assistant position is designed to give interested individuals a chance to experience full-time outdoor ministry. Program Assistants serve from September through May and help in all aspects of Rainbow Trail's ministry. If you would like more information, please contact the camp office.

ORGANIZATIONAL GIFTS

Adams County Chapter Thrivent Financial for Lutherans
Collegiate Peaks Chapter Thrivent Financial for Lutherans
Denver County Chapter Thrivent Financial for Lutherans
Douglas County Chapter Thrivent Financial for Lutherans
Fremont-Custer County Thrivent Financial for Lutherans
Garden of the Gods Chapter Thrivent Financial for Lutherans
Gateway Thrivent Financial for Lutherans
Mesa County Chapter Thrivent Financial for Lutherans
Metro Plains Chapter Thrivent Financial for Lutherans
North Jeffco Chapter Thrivent Financial for Lutheran
Pikes Peak Chapter Thrivent Financial for Lutherans
Regional Thrivent Financial for Lutherans
Sangre de Cristo Thrivent Financial for Lutherans
Southeast Metro Thrivent Financial for Lutherans
South Jeffco Thrivent Financial for Lutherans
Twin Peaks Chapter Thrivent Financial for Lutherans

GIFTS IN HONOR OF

Mr. & Mrs. Alvin Awtrey, Jr. by Chuck & Robbie Breaux	Jesse, Jill & Alex Kreger's Birthdays by Lloyd & Dorothy Stivers Don Kreger by Lloyd & Dorothy Stivers Glenn Kreger
W.B. Porch Family by Harriett Porch	
Ellie Fauser by Bruce & Kinga Fauser	Eric & Pam Gohl's 10 year anniversary by Don & Judy Gohl

OPEN Bridging Borders Dates
are still available
Call now! Slots will fill up quickly!

'Tis the Season to Give!

If you have ever wanted to make a difference... and contribute to a greater cause, Rainbow Trail offers a unique way to do so. Our Campership Funds help give youth in less fortunate financial situations the chance to still experience a week at camp. What a great gift: sending a deserving kid to camp to experience God in this beautiful setting! Contact Dave at the Canon City office for more information. 719-276-5233 or dave@rainbowtrail.org

Fresh Ehr

By Nick Ehrhardt - Director of Site and Facilities

Perhaps a few of you made it up to camp some Saturday morning this past summer to hear Dave's talk at one of the week's closing worship services. The summer's forest fire certainly provided plenty of subject matter for those talks. One of Dave's favorite anecdotes to mention was the fact that for him the summer's events—the fire and our subsequent refugee journey—really hit home the fact that Rainbow Trail's ministry is not about our site; it is instead about God working through our staff and campers to make the experience of Rainbow Trail what it is. "Well," I often chuckled to myself, "If it's not about our site, then I guess, as Site Director, that makes me a non-essential employee."

In all seriousness, this summer was filled with plenty of learning experiences for all of us. And watching the way that our staff, both full time and seasonal, worked together to pull off the miracle that was this past summer, it became such a blessing for me to feel instead fully essential, a member of the multi-faceted body of Rainbow Trail, knowing that what I offer this place is a vital piece among many pieces that allow this place to work. It was a joy to witness just how very many others offer their own vital pieces, so selflessly, so persistently. Wow.

I hope that if you haven't had the chance to visit our site after the fire that you have at least had the opportunity to see some pictures. God worked diligently through so many channels (the firefighters, in particular) that once on our site, it becomes a challenge to even notice the burned areas. There are certainly a lot of places that are very different from what we were all used to but I am proud to say that after a busy series of hard working weeks, with joyful and dirty help from so many different people, the site is now looking better than ever. The black char sneaking through the edges is not a threat but instead evidence and a reminder of how Big our God is, how small we are, and how dynamically alive the relationship between us and God truly is.

Fall is here (the yellow aspens set against the black burned area is stunning!) so now we're busy waiting for winter (I'm excited to see the black trees looming over a bunch of white snow!) with hopes of lots of snow to bring moisture back to the parched and dusty ocean that the green island of Rainbow Trail floats in. As I run around the site prepping for winter I'm filled with gratitude for what this past summer has been. A very big thanks to the maintenance crew and all of the summer staff who were truly an inspiration to work with. And thank you to everyone who gave so willingly, all summer long, of your hard working hands and persistent prayers. Come on up and visit this winter!

Nick



Horn Creek Thank You Fund

Thank you to those of you who contributed to the Horn Creek Thank You Gifts. Because of the incredible gift that they gave us of their site we were able to continue our ministry for all 10 weeks of the 2011 summer.

Roger & Alice Aden	Grace Lutheran Church, Boulder	Bob & Linda Morton
Bobbie Anderson	Susan Grady	Gail & Mark Muehlethaler
Augustana Lutheran Church, Denver	Eric & Carolyn Gustafson	Delores & Gerry Mueller
Ron & Olga Augustson	Ray & Carrie Harney	Jim & Janice Mulvany
Jerry & Karen Barslou	Dawn Hartung	Scott & Rebecca Near
Leon & Linda Bauman	Jim & Barb Hauck	Josh & Caitlin Nelson
Deborah Bayles	Joy Hawkins & Randall Clark	Kirsten & Eric Nelson
William & Darlene Beals	George & Sheryl Hellmuth	Patti Nelson
Kristi & Scott Beebe	Bill & Janille Hicks	Chuck & Michelle Nichols
Marty Bendel Waite	Caroline & David Hoffman	John & Kim Olson
Rosetta Bidne	Koren Holden & Randall Toney	Orvid & Lois Olson
Jim & Cindy Britton	Lyle & Marcia Hollingsworth	Mo & Marcia Oppermann
Jerry & Joan Brown	Holy Trinity Lutheran Church, Littleton	Carrie & Eric Oss
Martin & Nancy Brown	Ruth Idler	Dawn & Evan Pedersen
Mike & Connie Burris	Rod Jacobus	Kevin & Denev Perkins
Diane Butler	Clay & Michelle James	Edward & Karen Pforr
Jeff & Trisha Carlson	Ben Jarvis	Sandy & Jeff Ramsey
Paul & Kathy Casey	Dave & Nellie Jarvis	Jim & Carol Reppert
Brad & Kathy Chewakin	Diana & Chuck Johnson	Debra Rex Engquist & Michael Rex
Addi Choi	Jacqueline Johnson	Mark & Michele Robinson
Christ the Servant Lutheran Church, Louisville	Marc & Marcia Johnson	Kevin & Darlene Rohrbaugh
Lisa & Matt Christian	Maxine Johnson	Joan & Mark Salisbury
Roger & Linda Coffey	Joy Lutheran Church, Parker	Tara & Chad Sawinski
Rebecca & Rich Collins	Allison & John Kane	Cheryl & Kevin Schink
Charles & Edith Cook	Peter Karasz	John & Penny Selden
Terri & Mark Cooper	Lisa & Chris Kassel	Hazel Shaner
Lauren & Ed Cotgagageorge	Craig Kelly	Shepherd of the Valley Lutheran Church, Grand Junction
Sharon Cox	King of Kings Lutheran Church, Pueblo	Jim & Bonnie Shumaker
Cross of Hope Lutheran Church, Albuquerque	Mary Koepp	Donna Skovgaard
Wesley & Norma Daberkow	Robert & Sharon Kolosseus	Karen Smith
Darwin & Helen Dalzell	Herbert Korff	Rick Smith
Jay Davis	Ollie Korte	Bob & Dortha Steinke
Judy & Louie Delaware	Richard & Carolyn Krieger	Bob & Janelle Stover
Maren Diercks & Paul Eppard	Severt & Mary Kvamme	Kathryn Strainer
Jill & Joe Doherty	Roger & Claudia Larson	Bart & Julie Stuckey
Maria & Paul Dresselhaus	Vicki & Chris Lieber	Corey & Jeanette Stull
Bob & Margie Dugan	Steph Lord & William McHardy	Jed & Allison Summerton
Frances Dunbar	Lord of the Hills Lutheran Church, Centennial	Bob & Jean Terry
Susan & Bill Duven	Steve & Nancy Lord	La'Arnie & Bertice Tise
Carl & Katie Edstrom	Lutheran Church of Hope, Broomfield	Gary & Marilyn Titus
Barbara Edwards	Randy & Phyllis Lynn	Trinity Lutheran Church, Monument
Todd & Natalie Erickson	Waverly Machamer	Mark & Lynn Twietmeyer
Dave & Ruth Ericson	Jeanne & Tim Maloney	Lise & Mike Uhrich
Kris Ericson	Meg Mansfield	Judy & Dave Van Auken
Mark & Debbie Erikson	Jeremy & Sharon Marburger	Patrick Vojta
Vince & Leigh Felletter	Peter & Susan Marty	Leonard & Judy Walgren
John & Miriam Ferguson	Marilyn & Ing Maurstad	Laura Wouters
Don & Ginny Fisher	Brent & Dawn Meyer	Terry & Holly Wubbena
Susan & David Fisk	Walt & Karyl Meyer	Betty & Ron Yergert
Kevin & Janet Flesch	Ken & Sheryl Mielke	Mel & Bonnie Yockstick
Chris & Stephanie Frankle	Bill & Bonnie Mohler	Dave Young
Martha & Dean Garner	Laurie & Clayton Mohler	Lori & Neil Zimmerman
Denise Gergen		

PARTNER CONGREGATIONS

These congregations have committed to partnering with Rainbow Trail by supporting the ministry through their congregation's budget.

Abiding Hope Lutheran Church, Littleton	Holy Love Lutheran Church, Aurora
All Saints Lutheran Austin, CO	Holy Shepherd Lutheran, Lakewood
All Saints Lutheran Women, Austin, CO	Holy Trinity Lutheran, Littleton
Amazing Grace Lutheran, Littleton	Holy Trinity Lutheran Women of the ELCA, Littleton
American Lutheran, Grand Junction	King of Glory Lutheran Church, Arvada
Ascension Lutheran, Colorado Springs	King of Kings Lutheran Church, Pueblo
Ascension Lutheran Women, Co. Springs	Lord of the Hills Lutheran, Centennial
Atonement Lutheran Church, Boulder	Lord of the Mountains Lutheran, Dillon
Atonement Lutheran Church, Lakewood	Lutheran Church of Hope, Broomfield
Augustana Lutheran Church, Denver	Lutheran Church of the Holy Spirit, Centennial
Bethany Lutheran, Cherry Hills Village	Lutheran Church of the Master, Lakewood
Bethany Lutheran Church Foundation, Cherry Hills Village	Lutheran Church of the Servant, Santa Fe, NM
Bethel Lutheran, Colorado Springs	Messiah Lutheran Church, Denver
Bethlehem Lutheran Church, Los Alamos	Mission Lutheran Church, Swink
Black Forest Lutheran, Colorado Springs	Mount Calvary Lutheran Church, Boulder
Centennial Lutheran Church, Englewood	Mount of the Holy Cross, Vail
Christ Evangelical Luth., Santa Fe, NM	Nativity Lutheran Church, Commerce City
Christ the King Lutheran Church, Denver	Our Father Lutheran Church, Centennial
Christ the King Lutheran, Durango	Our Savior Lutheran Church, Greeley
Christ the Savior, Aurora	Our Saviour's Lutheran Church, Ft. Collins
Christ the Servant, Louisville	Peace Lutheran Church, Las Cruces, NM
Community of Joy Luth., Rio Ranch, NM	Prince of Peace Lutheran, Colorado Springs
Cross of Christ Lutheran, Broomfield	Prince of Peace Women of ELCA, Col Springs
Cross of Glory Lutheran Church, Denver	Prince of Peace Lutheran Church, Denver
Cross of Hope Luth., Albuquerque, NM	Rocky Mountain Synod
Elim Lutheran Church, Ogden, UT	Shepherd of the Hills Lutheran, Canon City
Evergreen Lutheran Church, Evergreen	Shepherd of the Valley Lutheran, La Salle
Faith Community Outreach, Longmont	Spirit of the Mountain Lutheran, Golden
Faith Lutheran Church, Security	South Zumbro Lutheran Church, Kasson, MN
First Lutheran Church, Colorado Springs	St. Andrew Lutheran Church, Arvada
First Lutheran Church, Longmont	St. Luke Lutheran Church, Albuquerque
Good Shepherd Luth., Glenwood Springs	St. Paul Lutheran Church, Albuquerque
Good Shepherd Lutheran Church, Denver	St. Peter Lutheran Church, Greenwood Village
Grace Lutheran Church, Boulder	St. Philip Lutheran Church, Littleton
Grace Lutheran Church, Colorado Springs	Tabor Lutheran Church, Pueblo
Grace Lutheran Women of the ELCA, Colo. Springs	Trinity Evangelical Lutheran Church, Boulder
Holy Cross Lutheran, Wheat Ridge	Trinity Lutheran Church, Fowler
Holy Ghost Luth., Fredericksburg, TX	Trinity Lutheran Church, Monument
	Valley Lutheran Church, Denver

Blazing New Paths!

Trailblazers and Pathfinders are Rainbow Trail's annual giving clubs that sustain and allow our ministry to grow. For as little as \$10 a month, or \$120 a year, you can become a Trailblazer and make a huge difference in everything that happens here at camp! Pathfinders are those that would like to give a little more. For \$1,000 a year, you can become a Pathfinder and can make a substantial difference in this incredible ministry. From Day Camp to Bridging Borders and camperships, Trailblazer and Pathfinder dollars help to make a difference in countless lives through wonderful faith experiences.

This year more than ever we need your support. Support from the Rocky Mountain Synod to Rainbow Trail will have been reduced by close to \$22,000 by the end of this January. We need your help in covering that difference.



If you are interested in becoming a member of Trailblazers or Pathfinders, please contact Dave at the Canon City office (719-276-5233) or by e-mail at dave@rainbowtrail.org.

CONTRIBUTORS

Thank you to the following friends of Rainbow Trail who gave a gift in 2011.

Kevin Althoff & Sandy Wittebort
 Gary & Marva Baldwin
 John & Gail Bartels
 Marty Bendel Waite
 Larry & Eleanor Bonicelli
 Rob & Marie Brandon
 David Brock & Ann Graham
 Brock
 Linda & Stephen Daniel
 Frances Dunbar
 William Eldridge
 Peter & Emily Feig
 Mark Feigal
 Vince & Leigh Felletter
 Kenton Felty & Lorraine Silva
 John & Miriam Ferguson
 Dale & Margaret Fetchenier
 Mark & Sarah Fincham
 John & April Flanigan
 Tod & Sudee Floyd
 Joel Friesenegger
 Art & Lori Gaide
 Mark & Nancy Galloway
 Bill & Sharon Gorman
 Steve & Lewanne Graeber
 Douglas & Janet Hahn
 Steven & Pamela Haigh
 Ray & Carrie Harney
 Mark & Nancy Hendrickson
 John & Valerie Hess
 Jay & Kim Hohensee
 Charles & Geraldine Johnson
 Erica Jurens
 Steve & Linda Jurens
 Peter Karasz
 Bruce & Sheila Kelly
 Craig & Toni Kelly
 Keith & Becky Kempke
 Jack & Donna Kenline
 Colette Kerlin
 Frank & Jacqueline Kolbusz
 Art & Michelle Kraus
 Heather Land
 Kristin & Mike Lavelle

Kevin & Catherine Lawrence
 Gregory & Gladeane Lefferdink
 Linda Leners
 Gary & Marianne Lennon
 David Lindholm & Kathy Sasak-
 Lindholm
 Nils & Barbara Lindroth
 Steve & Nancy Lord
 Carol & Dan Ludwig
 Waverly Machamer
 Matt & Michelle Mackeprang
 Timothy & Jeanne Maloney
 Judy Marsh
 Don & Bernie Mathison
 Lawrence & Janet Matschull
 Kristine Maugans
 Don & Rose McFall
 Betty Merrell
 Alma Mischke
 William & Bonnie Mohler
 Bob & Linda Morton
 Sarah & Mike Murphy
 Jim & Judy Myra
 Kirk & Trish Neubauer
 Paul Olsen
 Orvid & Lois Olson
 Joseph & Anna Orgeron
 Babs & Leigh Persons Quist
 Ruth Peterson
 Dean Pieper
 Julie Prange
 Ben Rude
 Kent & Barbara Sather
 Morgan Satrom
 Allen Schauer
 Herman & Joan Schempp
 Kelsey Scherven
 Patti Schoenfeld
 Roger & Margaret Schutte
 Hazel Shaner
 Kevin & Graciela Sholander
 Cliff & Teak Simonton
 Donna Skovgaard
 Larry & Elaine Sohrweid

Alfred & Nancy Spencer
 Michael & Carrie Stadtmueller
 Bob & Dorthea Steinke
 Jed & Allison Summerton
 Peter & Barbara Swenson
 Mark & Natalie Talley
 Jim & Lisa Tuller
 Steven & Andrea Vahl
 Wally Vives
 Larry & Catherine Wacker
 Bob & Renee Wade
 Michel & Annette Ward
 Micheal & Tammy Washburn
 Erik & Kim Williams
 Laura Wouters
 Todd & Christine Wright

FIRE RELIEF

Agape Kure Beach Ministries
 Deborah Bayles
 Colleen & Dave Bunkers
 Terri & Mark Cooper
 Greg Eklund
 Jerry & Lore Jean Ethridge
 Vince & Leigh Felletter
 Scott & Janet Harrison
 Jeff & Annie Heath
 John & Valerie Hess
 Holy Ghost Lutheran Church, Freder-
 icksburg, TX
 Jennifer & John Hopkins
 Jacqueline Johnson
 Wendy & H Jay Knipple
 Karen & George Lim
 Nicole & Robert Long
 Miscellaneous
 Tim & Holly Nelson
 Charles & Catherine Olin
 John & Kim Olson
 Jeffrey Pearson
 Kevin & Darlene Rohrbaugh
 Joan & Mark Salisbury
 Cliff & Teak Simonton
 Thrivent Financial
 La' Arnie & Bertice Tise
 Robert & Denise Tristano
 Gwen Ubbinga
 Jana Zimmerman

PATHFINDERS

The following individuals are members of the 2011 Pathfinders' Club. Pathfinders is RTLC's next level giving club that keeps the ministry at Rainbow Trail growing and expanding. These individuals have given \$1,000 or more to this great ministry. To join, contact Dave Jarvis 719-276-5233 or find out more and donate online at www.rainbowtrail.org/donate. Many thanks to the following supporters of Rainbow Trail!

Challenger Peak

\$1,000-1,499
 Rosetta Bidne
 Darren & Amy DeYoung
 Katharine Dugan
 Kim & Paul Eggen
 Dave & Ruth Ericson
 Chris & Stephanie Frankle
 Karl & Wendy Gustafson
 Fred & Audrey Hansen
 David & Sharon Henneke
 Keith & Jean Hovland
 Betty Kirsebom
 Don & Jill Kreger
 Jennifer Lambertus
 Steve & Cheryl Mahon
 Tim & Jeanne Maloney
 Hunter & Janet McDaniel
 Brent & Dawn Meyer
 Mark & Kim Meyer
 Scott & Julie Miller
 Jim & Janice Mulvany
 Tim & Holly Nelson
 Chuck & Gayle Newell
 Rick & Judy Oakes
 Gary & Beverly Oppedahl
 Jim & Shirley Pettigrew
 Marvin & Nadyne Plugge
 Calvin & Cathy Pyle
 Rick & Jill Reed
 Walter Roberts
 Don & June Simonton
 Karen Smith
 Mike & Julie Speck
 Laura Springhetti & Siam
 Oottamasathien
 Corey & Jeanette Stull

Gary & Marilyn Titus
 Craig & Kathy Twaddell
 Ruth Von Mosch
 Marsha Yosten

Long's Peak

\$1,500-2,499
 Guy & Tammy Childs
 Fred & Janice Ehlers
 Kurt & Marsha Ehrhardt
 Bob & Ann Erickson
 Richard Gash
 Tom & Sharil Gould
 Todd & Jill Grivetti
 Ann Hultquist & Roger Loots
 Dave & Nellie Jarvis
 Ken & Sheryl Mielke
 Bob & Michelle Szydlowski
 Edna Webster

Mt. Elbert

\$2,500-\$4,999
 Kevin & Sue Bethke
 Tom & Allison Bucket
 Michael & Connie Burriss
 Bob & Margie Dugan
 Todd & Mary McNeil
 Randy & Lisa Schrader

Mt. Princeton

\$5,000-\$9,999
 Anonymous
 Chuck & Michelle Nichols
 David & Edie May Phillips
 Jim & Virginia Winkelman
 Bob & Joyce Witte

GIFTS IN MEMORY OF

Ann Smith by
 Anonymous
 Tim & Amy Kessler
 Kevin & Catherine Lawrence

Faith Rose Scherer
 Josh & Caitlin Nelson

Aaron Grider by
 Charlie & Linda Kelly
 Robert Peters & Susan Kooman
 Rick & Jill Reed

Bill, Edwin & Jimmy Porch by
 Harriet Porch

Joe Van Ordstrand by
 Norm & Margaret Aarestad
 Chester & Patricia Cotter
 Philip & Shirley Matza

Angel Ash by
 Herbert & Myra Bagenstos

Ruth Smith by
 Nancy Ballou & Dorothy Major
 Carl & Katie Edstrom
 King of Glory Lutheran, Arvada
 Betty Merrell
 Rashelle & Howard Pearson

Sandra Vinnedge
 Orville & Ann Werner

Wilma DeLong by
 Christ the King Lutheran, Denver

Darlene Remstad by
 Rick & Charlene Coulson
 Stacy Coulson
 Darwin & Helen Dalzell
 Tom & Karen Hart
 Dave & Nellie Jarvis
 Kevin & Cheryl Schenk
 Bob & Aurice Worley

Bill Richter by
 Rick & Charlene Coulson

Marvin Ludwig by
 Carol & Dan Ludwig

Jerry Nelson by
 Holly & Nick Massie

Lloyd Vickery by
 Robert & Marilyn Rukavina

Phyllis Peterson by
 Robert & Marilyn Rukavina

BART LARZELERE MEMORIAL

Campership Endowment by
 Christ Evangelical Lutheran Church - Santa Fe

BUY-A-BOARD FUND (BRISTLECONE DECK)

Jerry & Joan Brown
 Larry & Lavona Brown
 Kris & Tim Carr
 Renae Dehard-Haes
 Dave & Ruth Ericson
 Vince & Leigh Felletter
 Rebbie Garza
 Denise Gergen
 Greg & Barbara Haschke
 Paul & Lynne Horpedahl
 Dave & Nellie Jarvis
 Heather Kistler
 Sandy & Van Kistler
 Robert & Sharon Kolosseus
 Don & Jill Kreger
 Matt & Michelle Mackeprang
 Kurt & Darlene Mader
 Adrian & Andrew Miller
 Laurie & Clayton Mohler
 Jim & Janice Mulvany
 Cathy Ode
 Charles & Catherine Olin

Gary & Bev Oppedahl
 Mo & Marcia Oppermann
 Anne-Marie Patrie & John Schneider
 Peace Lutheran Church
 Manhattan, KS
 Babs Persons Quist & Leigh Quist
 Harriet Porch
 Eline Riley
 Rick & Becky Romano
 Michael & Kristen Saathoff
 Gary & Kay Schritter
 Jim & Bonnie Shumaker
 Mark & Natalie Talley
 Merlyn & Jerry Tjelle
 Amber Turner
 Craig & Kathy Twaddell
 Erin Twaddell
 Roberta Wentworth
 Jim & Virginia Winkelman
 Sara Witte
 Bill & Dee Yocum
 Marsha Yosten

Crestone Peak

\$10,000-14,999
 Kit & LeEtta Choi
 Steven Westcott & Deborah Agar

DESIGNATED GIFTS

Dennis Bagenstos & Judy Leiseth
 Faith Community Church
 Outreach, Longmont
 James & Candy Hersch
 Ben Larson & Beth Titus
 Bob & Michelle Szydlowski

GIFTS IN KIND

Ernie & Hazel Adolf
 Bruce & Nancy Albertson
 Bethlehem Lutheran Church, Los
 Alamos
 Colleen & Dave Bunkers
 Craig & Lynda Cox
 Nancy Dahlgren
 Phil & Traci Dorth
 Bob & Margie Dugan
 Dave & Ruth Ericson
 Michelle & Jeff Fossum
 Steve & Linda Jurens
 Art & Michelle Kraus
 Severt & Mary Kvamme
 Lutheran Church of the Holy
 Spirit, Centennial
 Ed & Eunice Mansfield

Mount Calvary Lutheran Church,
 Boulder
 Judith & Frederick Oakes
 Corey Okes
 Corey & Katie Okes
 Colette Ownby
 Mark & Heidi Peterson
 Chris & Abby Raap
 Mary & Phillip Reder
 Michael & Kristen Saathoff
 Mark & Diane Sather
 Randy & Lisa Schrader
 Chris Seaman
 Jim & Pat Speckmann
 US Food Service, Englewood

We make every effort to list each donor, but mistakes do happen. Please call 719-276-5233 if we have inadvertently omitted your name or listed you

Want To Make A Difference?

Give a gift to Rainbow Trail and invest in the faith lives of thousands of kids. In today's economy there is no better return!

Donate
 Online Anytime

www.rainbowtrail.org/donate



Events Calendar 2011 - 2012

November 11-13	RTLC Confirmation Retreat
December 2-4	AdventFest
February 24-26	RTLC Confirmation Retreat
February 27	Summer Staff applications due
March 19-21	Youth Directors' Retreat
March 30	Summer Volunteer apps due
April 12-15	Spring Women's Retreat
April 26-29	Men's Adventure Camp
May 25-28	Memorial Day Work Weekend
May 28-June 9	Staff Training
August 31-September 1	Labor Day Family Weekend
September 13-16	Men's Fly Fishing Retreat
TBA	Grace Race and Rendezvous Weekend

TRAILBLAZERS

The following individuals are members of the 2010 Trailblazers Club. Trailblazers is an annual giving club that keeps the ministry at Rainbow Trail alive and growing. To join, contact Dave 719-276-5233 or check out the "Support Us" Eagle Peak Club

\$500-\$999

- Anonymous
- Roger & Alice Aden
- Roger & Olga Augustson
- Leon & Linda Bauman
- Chuck & Robbie Breaux
- Jim & Cindy Britton
- Miles Brown
- Clint & Martha Calvert
- Emily & Scott Dalen
- Jim & Joanne Dumler
- Denise Gergen
- Dennis & Lynn Gimlin
- Cordell Halverson
- John & Peggy Harris
- David & Linda Higbea
- Koren Holden & Randall Toney
- Wesley & Amy Hout
- Tim & Amy Kessler
- John & Dinah Kress
- Mavis Kyllonen & Karen Swanhorst
- Randy & Phyllis Lynn
- John & Pam Marietta
- Delores & Gerald Mueller
- Karen Nulle
- Dave & Michelle Okes
- Jon Palmquist
- Jim & Carol Reppert
- Willie & Julie Reusser
- Dave & Betsy Risendal
- Andrew & Annette Roinestad
- Newton & Ann Seitzinger
- Ben Spiger & Kendra Wilde
- Erik & Kim Williams
- Tom Williamsen
- Lester & Marianne Woodward

Rainbow Lake Club

\$250-\$499

- Norm & Margaret Aarestad
- Herbert & Myra Bagenstos
- Dennis Bagenstos & Judy Leiseth
- Steven & Theresa Beal
- Elizabeth Bockstahler
- Larry & Lavona Brown
- Miles Brown
- Jeff & Trisha Carlson
- Gary & Karen Cook
- Rick & Charlene Coulson
- Dave & Carissa Cruson
- Darwin & Helen Dalzell
- Bill & Charlotte Dausse
- Ina Kay & Tom Devers
- Greg & Kristine Dieter
- Phil & Traci Dorth
- Carl & Katie Edstrom
- Barbara Edwards
- Gudrun Emrich

Base Camp

\$120-\$249

- Edna Anderson
- Keith & Cara Avallone
- Marlys Bernhard
- Gary & Patty Bliss
- Ramona Bouzard
- Walter Bouzard
- Pauline Brodbeck
- Jerry & Joan Brown
- Martin & Nancy Brown
- Phyllis & Jack Brown
- Mardella Buhr
- Addison Choi
- Mark & Terri Cooper
- Marie Cortelyou
- Sharon Cox
- Trudy Dierschow
- Paul & Kathy Edstrom
- Russ & Pat Edwards
- John & Kathleen Erickson
- Kris Ericson

- Scott & Sue Fernau
- Mark & Sarah Fincham
- Ron Frost
- Steve Gustafson & Beth Knuston-Gustafson
- Paul & Lynne Horpedahl
- Pat Holman & Phil Wangberg
- Marlin & Mary Jahnke
- Stanley & Evelyn John
- Marc & Marcia Johnson
- Steve & Linda Jurens
- Jack & Donna Kenline
- Sandy & Van Kistler
- Art & Michelle Kraus
- David & Rosemarie Kumpe
- Oliver Korte
- Severt & Mary Kvamme
- Ben Larson & Beth Titus
- Jean Larson
- Mike & Kristin Lavelle
- Kevin & Catherine Lawrence
- Dale & Mary Ann Louis
- Babs Martin & Tom Kopolinski
- Dennis & Karen Martinson
- Marilyn & Ingolf Maurstad
- Walter & Karyl Meyer
- Andrew & Adrian Miller
- Anne Wenzel & David Miller
- Joyce Mills
- Clayton & Laurie Mohler
- Eric & Kirsten Nelson
- Josh & Caitlin Nelson
- Patti Nelson
- Richard & Penny Newman
- Keith & Laura Padgett
- Kevin & Denny Perkins
- Carol Picco
- Josh & Alissa Plumley
- Joe & Donna Richardson
- Gary & Malee Schoon
- Gary & Kay Schritter
- Carl & Gail Schurman
- Brad & Brooke Shannon
- Kevin & Sarah Smith
- Kirstine Stjernholm
- Kathryn Strainer
- Wayne & Marion Talley
- Amber Turner
- Bea Varney
- Clarence & Marlyn Ver Sluys
- Helen Wagner
- Greg & Deb Watson
- Roberta Wentworth
- Keith & Tammy Wetter
- Erik & Kim Williams
- Karen Witt & James Puga
- Sara Witte
- Terry & Holly Wubbena
- Betty & Ron Yergert
- Gene & Angie Youngmann

LEELAND & ELLEN SOKER ANNUAL CAMBERSHIP FUND

Bethany Lutheran Church Foundation, Cherry Hills Village
Jim & Cindy Britton
Jan & Rives Duncan
Don & June Simonton

A different, yet significant way to support the ministries of Rainbow Trail.

Needs List



These are essential items needed for our day-to-day operations. A designated monetary gift would certainly be welcome as well. You can bring these items with you any time you come to camp or call us to arrange a drop-off

- | | |
|--------------------------------------|---|
| White 20# copy paper (laser quality) | Long barreled fire lighters |
| Reams of colored copy paper | 9x12 manila envelopes (no clasps) |
| Masking tape | Flip chart pads |
| Adobe Creative Suite 4 (Mac) | 6x9 manila envelopes (no clasps) |
| Sharpie brand permanent markers | Boxes of 1/3 cut file folders |
| Scotch tape | 5 ft. round white "Lifetime" tables |
| Duct tape | Computer battery back-up system |
| Postage stamps | 4 drawer file cabinet |
| UPS surge protector power strips | 6 or 8 ft. rect white "Lifetime" tables |
| Packs medium black or blue pens | A "new" economic "commuter" car |

Wish List

These are larger items that we haven't budgeted for, but would love to have. Contact us if you would like to donate any of these items, new or gently used. You can bring them to camp, or call to arrange a drop-off



- | | |
|--|--------------------------------------|
| New sound system (call us first) | New LCD projectors |
| Free standing space heaters | Digital camera (min 8 megapixel) |
| 50-yard intercom system | Costumes for Life of Christ |
| Cotton work gloves | 5 gallon shop vacs |
| Industrial mop buckets (call us first) | Upright vacs |
| Reciprocating saw | New high chairs |
| Jump drives/thumb drives | Pack-n-play Cribs |
| Mac desktop computers | 32" Digital flat screen TV's |
| New PC desktop computer (call us) | DVD players with remotes |
| New full sheets - white | Gator 6 wheeled vehicle |
| New full or single mattress pads | 20 ft. or longer extension cords |
| New queen sheets - white | New gas grills |
| New queen mattress pads | Motorola 2-way radios |
| New 3-piece towel sets | 100 foot cloth measuring tape |
| 10 gal Rubbermaid bins for kitchen | Bobcat Pallet Forks & Toothed Bucket |

Administrative Office

107 S. 9th Street, Suite B
Canon City, CO 81212
Phone: 719-276-5233
Fax: 719-276-5235
Office Hours: 9 am - 5 pm



Camp Office

P.O. Box T
3056 County Road 198
Hillside, CO 81232
Phone: 719-942-4220
Fax: 719-942-4000

Full-Time Staff

- Dave Jarvis, Executive Director.....dave@rainbowtrail.org
- Sara Cumbie, Executive Secretary.....info@rainbowtrail.org
- Aurice Worley, Bookkeeper.....accounting@rainbowtrail.org
- Ben Larson, Dir of Compass Points & Day Camp.....ben@rainbowtrail.org
- Ash McConnell, Dir of Onsite & Bridging Borders.....ash@rainbowtrail.org
- Nick Ehrhardt, Dir of Site & Facilities.....nick@rainbowtrail.org
- Chris Seaman, Food Service Manager.....chris@rainbowtrail.org

Board of Directors

- President.....Michelle Okes, Bethany Lutheran, Denver, CO
- Vice Pres...Rev. Vera Guebert-Steward, Evergreen Lutheran, Evergreen, CO
- Secretary.....Scott Skrine, King of Glory Lutheran, Arvada, CO
- Treasurer.....Karen Nulle, First Lutheran, Gypsum, CO
-Rev. Jeff Carlson, Good Shepherd Luth, Glenwood Spgs, CO
-Rev. Tim Stadem, Our Saviour's Luth, Ft. Collins, CO
-Chris Lieber, First Lutheran, Colorado Springs, CO
-Laurie Heimes, Evergreen Lutheran, Evergreen, CO
-Josh Nelson, Holy Trinity, Littleton, CO

www.rainbowtrail.org